

Datasheet for ABIN184708
anti-DKK2 antibody (C-Term)[Go to Product page](#)

1 Image

Overview

Quantity:	100 µg
Target:	DKK2
Binding Specificity:	C-Term
Reactivity:	Human
Host:	Goat
Clonality:	Polyclonal
Conjugate:	This DKK2 antibody is un-conjugated
Application:	Western Blotting (WB), ELISA

Product Details

Purpose:	DKK2
Immunogen:	Peptide with sequence ATYSSKARLHVCQKI, from the C Terminus of the protein sequence according to NP_055236.1.
Sequence:	ATYSSKARLH VCQKI
Isotype:	IgG
Specificity:	From sequence analysis it is possible that this product will crossreact with DKK4, unfortunately this has not yet been specifically tested.
Cross-Reactivity:	Cow, Dog, Human, Mouse, Rat
Purification:	Purified from goat serum by ammonium sulphate precipitation followed by antigen affinity chromatography using the immunizing peptide.

Product Details

Grade: Verified

Target Details

Target: DKK2

Alternative Name: DKK2 ([DKK2 Products](#))

Background: DKK2, dickkopf homolog 2 (Xenopus laevis), DKK-2, Dickkopf gene 2, dickkopf (Xenopus laevis) homolog 2, dickkopf 2, dickkopf homolog 2, dickkopf related protein-2

Gene ID: 27123

NCBI Accession: [NP_055236](#)

Pathways: [WNT Signaling](#)

Application Details

Application Notes: Western Blot: Approx 28 kDa band observed in Human Heart lysate (calculated MW of 28.5 kDa according to NP_055236). Recommended concentration: 1-3 µg/mL
Peptide ELISA: antibody detection limit dilution 1:8000.

Restrictions: For Research Use only

Handling

Format: Liquid

Concentration: 0.5 mg/mL

Buffer: Supplied at 0.5 mg/mL in Tris saline, 0.02 % sodium azide, pH 7.3 with 0.5 % bovine serum albumin.

Preservative: Sodium azide

Precaution of Use: This product contains Sodium azide: a POISONOUS AND HAZARDOUS SUBSTANCE which should be handled by trained staff only.

Handling Advice: Minimize freezing and thawing.

Storage: -20 °C

Storage Comment: Aliquot and store at -20°C, with minimal freeze/thawing. A working aliquot may be refrigerated at 4°C for a few weeks and still remain viable.

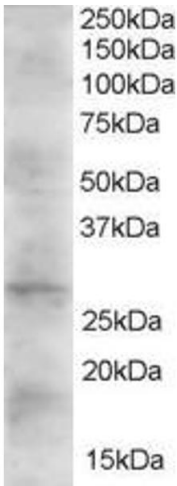


Image 1. ABIN184708 (2µg/ml) staining of Human Heart lysate (35µg protein in RIPA buffer). Primary incubation was 1 hour. Detected by chemiluminescence.