



[Go to Product page](#)

Datasheet for ABIN1847206

anti-CaMK2 alpha/beta/delta antibody (pThr305, Thr305)

2 Images

Overview

Quantity:	100 µL
Target:	CaMK2 alpha/beta/delta
Binding Specificity:	pThr305, Thr305
Reactivity:	Human, Mouse, Rat
Host:	Rabbit
Clonality:	Polyclonal
Conjugate:	This CaMK2 alpha/beta/delta antibody is un-conjugated
Application:	Immunohistochemistry (IHC), ELISA, Western Blotting (WB)

Product Details

Immunogen:	The antiserum was produced against synthesized phosphopeptide derived from human CaMKII around the phosphorylation site of threonine 305 (I-L-TP-T-M).
Specificity:	Rabbit polyclonal antibody against CaMK2 alpha/beta/delta protein. Specificity is as follows for the reactive species: H:T305/306/306, M:T305/306/306, R:T305/306/306
Purification:	The antibody was affinity-purified from rabbit antiserum by affinity-chromatography using epitope-specific immunogen

Target Details

Target:	CaMK2 alpha/beta/delta
Abstract:	CaMK2 alpha/beta/delta Products
UniProt:	Q9UQM7 , Q13554 , Q13557

Application Details

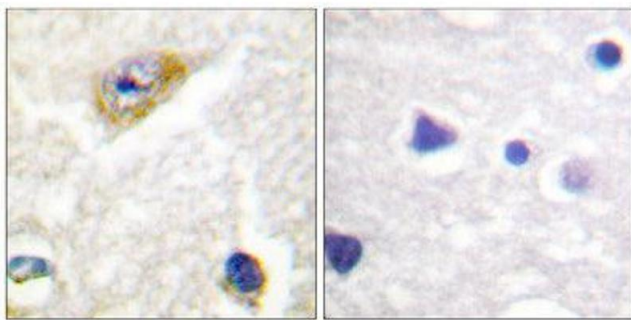
Restrictions: For Research Use only

Handling

Storage: -20 °C

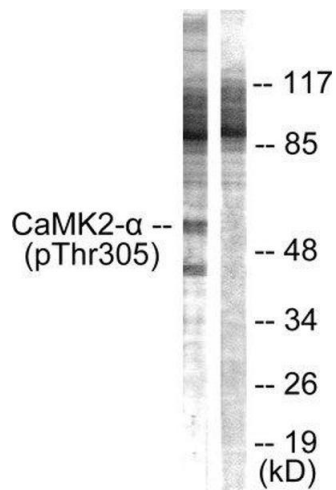
Storage Comment: Aliquot and store at -20 °C. Avoid repeated freeze/thaw cycles.

Images



Immunohistochemistry

Image 1.



Western Blotting

Image 2.