

Datasheet for ABIN184722
anti-MARK4 antibody (C-Term)

4 Images

[Go to Product page](#)

Overview

Quantity:	100 µg
Target:	MARK4
Binding Specificity:	C-Term
Reactivity:	Human, Mouse
Host:	Goat
Clonality:	Polyclonal
Conjugate:	This MARK4 antibody is un-conjugated
Application:	ELISA, Western Blotting (WB), Flow Cytometry (FACS)

Product Details

Purpose:	MARK4L
Immunogen:	Peptide with sequence IKRKPPPGCSDSPGV, from the C Terminus of the protein sequence according to NP_113605.2.
Sequence:	IKRKPPPGCS DSPGV
Isotype:	IgG
Specificity:	This antibody is expected to recognize the reported long isoform 1 (NP_113605.2) only.
Cross-Reactivity:	Human, Mouse
Purification:	Purified from goat serum by ammonium sulphate precipitation followed by antigen affinity chromatography using the immunizing peptide.
Grade:	Verified

Target Details

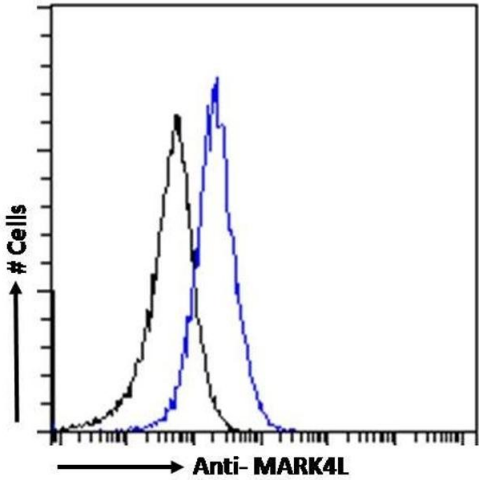
Target:	MARK4
Alternative Name:	MARK4 (MARK4 Products)
Background:	MARK4, MAP/microtubule affinity-regulating kinase 4, MARKL1, KIAA1860, Nbla00650, MARK4 serine/threonine protein kinase, MAP/microtubule affinity-regulating kinase like 1, FLJ90097, putative protein product of Nbla00650
Gene ID:	57787
NCBI Accession:	NP_113605

Application Details

Application Notes:	Western Blot: Approx 70 kDa band observed in Human Prostate lysates (calculated MW of 75.3 kDa according to NP_113605.2). Recommended concentration: 0.3-1 µg/mL. Peptide ELISA: antibody detection limit dilution 1:128000.
Comment:	Flow Cytometry: Flow cytometric analysis of A431 cells. Recommended concentration: 10ug/ml.
Restrictions:	For Research Use only

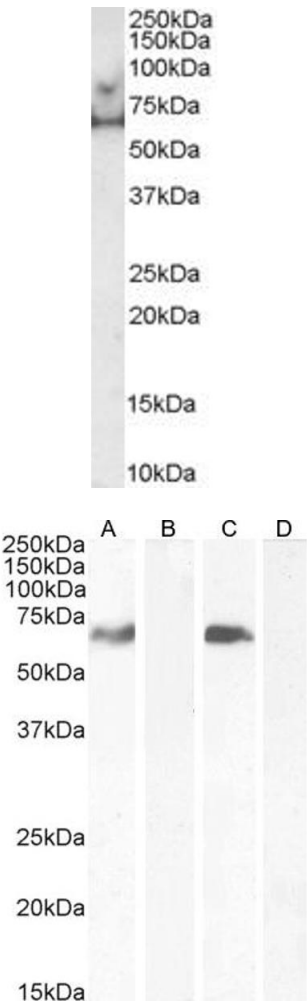
Handling

Format:	Liquid
Concentration:	0.5 mg/mL
Buffer:	Supplied at 0.5 mg/mL in Tris saline, 0.02 % sodium azide, pH 7.3 with 0.5 % bovine serum albumin.
Preservative:	Sodium azide
Precaution of Use:	This product contains Sodium azide: a POISONOUS AND HAZARDOUS SUBSTANCE which should be handled by trained staff only.
Handling Advice:	Minimize freezing and thawing.
Storage:	-20 °C
Storage Comment:	Aliquot and store at -20°C, with minimal freeze/thawing. A working aliquot may be refrigerated at 4°C for a few weeks and still remain viable.



Flow Cytometry

Image 1. (ABIN184722) Flow cytometric analysis of paraformaldehyde fixed A431 cells (blue line), permeabilized with 0.5 % Triton. Primary incubation 1hr (10 µg/mL) followed by Alexa Fluor 488 secondary antibody (1 µg/mL). IgG control: Unimmunized goat IgG (black line) fol



Western Blotting

Image 2. ABIN184722 (0.5µg/ml) staining of Human Prostate lysate (35µg protein in RIPA buffer). Primary incubated for 1 hour. Detected by chemiluminescence.

Western Blotting

Image 3. (ABIN184722) (0.3 µg/mL) staining of Human Cerebellum lysate (A) + peptide (B), Mouse Brain lysate (C) + peptide (D). (35 µg protein in RIPA buffer). Detected by chemiluminescence.

Please check the [product details page](#) for more images. Overall 4 images are available for ABIN184722.