

Datasheet for ABIN184723
anti-SWAP70 antibody (C-Term)

3 Images

[Go to Product page](#)

Overview

Quantity:	100 µg
Target:	SWAP70
Binding Specificity:	C-Term
Reactivity:	Human
Host:	Goat
Clonality:	Polyclonal
Conjugate:	This SWAP70 antibody is un-conjugated
Application:	Western Blotting (WB), ELISA, Immunohistochemistry (IHC)

Product Details

Purpose:	SWAP70
Immunogen:	C-EEREKNWKEKKTTE
Sequence:	EEREKNWKEK KTTE
Isotype:	IgG
Cross-Reactivity:	Human, Mouse, Rat
Purification:	Purified from goat serum by ammonium sulphate precipitation followed by antigen affinity chromatography using the immunizing peptide.
Grade:	Verified

Target Details

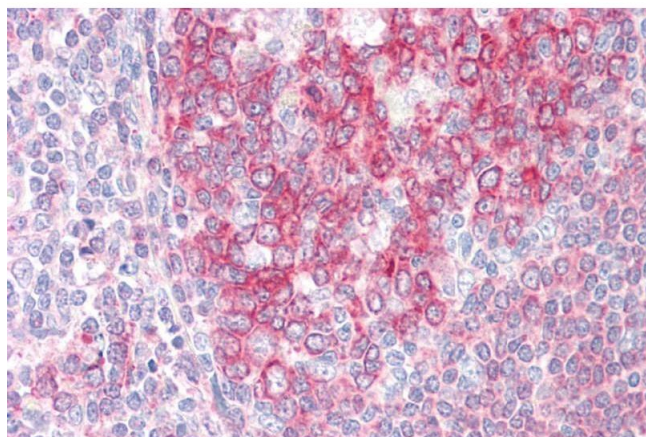
Target:	SWAP70
Alternative Name:	SWAP70 (SWAP70 Products)
Background:	SWAP70, SWAP-70 protein, SWAP-70, KIAA0640, KIAA0640 protein, FLJ39540, HSPC321, SWAP switching B-cell complex 70 kDa subunit
NCBI Accession:	NP_055870
Pathways:	Production of Molecular Mediator of Immune Response

Application Details

Application Notes:	<p>Immunohistochemistry: Paraffin embedded Human Tonsil. Recommended concentration: 5 µg/mL.</p> <p>Western Blot: Approx 70 kDa band observed in Human Lymph Node and Human Peripheral Blood Mononucleocytes lysates (calculated MW of 69.0 kDa according to NP_055870.2).</p> <p>Recommended concentration: 0.1-0.3 µg/mL. Primary incubation was 1 hour.</p> <p>Peptide ELISA: antibody detection limit dilution 1:128000.</p>
Restrictions:	For Research Use only

Handling

Format:	Liquid
Concentration:	0.5 mg/mL
Buffer:	Supplied at 0.5 mg/mL in Tris saline, 0.02 % sodium azide, pH 7.3 with 0.5 % bovine serum albumin.
Preservative:	Sodium azide
Precaution of Use:	This product contains Sodium azide: a POISONOUS AND HAZARDOUS SUBSTANCE which should be handled by trained staff only.
Handling Advice:	Minimize freezing and thawing.
Storage:	-20 °C
Storage Comment:	Aliquot and store at -20°C, with minimal freeze/thawing. A working aliquot may be refrigerated at 4°C for a few weeks and still remain viable.



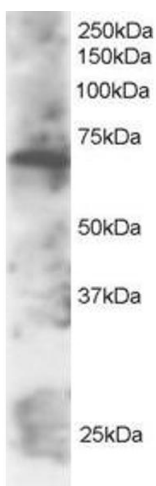
Immunohistochemistry

Image 1. ABIN184723 (5µg/ml) staining of paraffin embedded Human Tonsil. Steamed antigen retrieval with citrate buffer pH 6, AP-staining.



Western Blotting

Image 2. ABIN184723 (0.1µg/ml) staining of Human Lymph Node lysate (35µg protein in RIPA buffer). Detected by chemiluminescence.



Western Blotting

Image 3. ABIN184723 staining (2µg/ml) of Daudi lysate (RIPA buffer, 30µg total protein per lane). Primary incubated for 12 hour. Detected by western blot using chemiluminescence.