

Datasheet for ABIN184724
anti-CREB3L4 antibody (C-Term)

2 Images

[Go to Product page](#)

Overview

Quantity:	100 µg
Target:	CREB3L4
Binding Specificity:	C-Term
Reactivity:	Human
Host:	Goat
Clonality:	Polyclonal
Conjugate:	This CREB3L4 antibody is un-conjugated
Application:	ELISA, Western Blotting (WB), Immunohistochemistry (IHC)

Product Details

Purpose:	AIBZIP / CREB3L4
Immunogen:	Peptide with sequence C-PSGRIRSVLHADEM, from the C Terminus of the protein sequence according to NP_570968.1.
Sequence:	PSGRIRSVLH ADEM
Isotype:	IgG
Specificity:	This antibody is expected to recognize both reported isoforms (NP_570968.1, NP_001242909.1). Reported variants represent identical protein: NP_001242908.1, NP_570968.1, NP_001242907.1 Reported variants represent identical protein: NP_001242909.1, NP_00124
Cross-Reactivity:	Human

Product Details

Purification: Purified from goat serum by ammonium sulphate precipitation followed by antigen affinity chromatography using the immunizing peptide.

Grade: Verified

Target Details

Target: CREB3L4

Alternative Name: CREB3L4 ([CREB3L4 Products](#))

Background: AIBZIP, cAMP responsive element binding protein 3-like 4, JAL, hJAL, ATCE1, CREB3, CREB4, androgen-induced basic leucine zipper, RP11-422P24.8, OTTHUMP00000035266, cAMP responsive element binding protein 1

Gene ID: 148327

NCBI Accession: [NP_570968](#), [NP_001242909](#)

Pathways: [Thyroid Hormone Synthesis](#)

Application Details

Application Notes: Immunohistochemistry: In paraffin embedded Human Prostate shows strong staining of cytoplasm in the secretory cells of the gland. Recommended concentration, 2-4 µg/mL.
Western Blot: Approx 50 kDa band observed in Human Placenta lysate (calculated MW of 43.4 kDa according to NP_570968.1). The observed molecular weight corresponds to the glycosylated form. Recommended for use at 0.5-2 µg/mL.
Peptide ELISA: antibody detection limit dilution 1:32000.

Restrictions: For Research Use only

Handling

Format: Liquid

Concentration: 0.5 mg/mL

Buffer: Supplied at 0.5 mg/mL in Tris saline, 0.02 % sodium azide, pH 7.3 with 0.5 % bovine serum albumin.

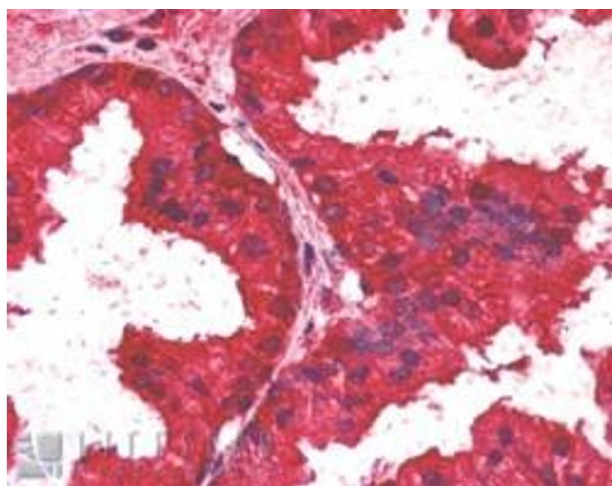
Preservative: Sodium azide

Precaution of Use: This product contains Sodium azide: a POISONOUS AND HAZARDOUS SUBSTANCE which should be handled by trained staff only.

Handling

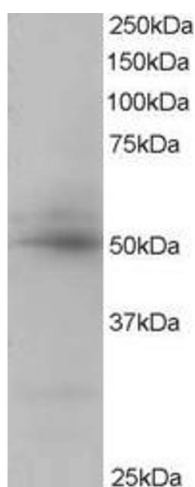
Handling Advice:	Minimize freezing and thawing.
Storage:	-20 °C
Storage Comment:	Aliquot and store at -20°C, with minimal freeze/thawing. A working aliquot may be refrigerated at 4°C for a few weeks and still remain viable.

Images



Immunohistochemistry

Image 1. ABIN184724 (2.5µg/ml) staining of paraffin embedded Human Prostate. Steamed antigen retrieval with citrate buffer pH 6, AP-staining.



Western Blotting

Image 2. ABIN184724 staining (0.5µg/ml) of Human Placenta lysate (RIPA buffer, 35µg total protein per lane). Primary incubated for 1 hour. Detected by western blot using chemiluminescence.