

Datasheet for ABIN184725
anti-BCAP31 antibody (C-Term)[Go to Product page](#)

2 Images

Overview

Quantity:	100 µg
Target:	BCAP31
Binding Specificity:	C-Term
Reactivity:	Human
Host:	Goat
Clonality:	Polyclonal
Conjugate:	This BCAP31 antibody is un-conjugated
Application:	Western Blotting (WB), ELISA, Immunohistochemistry (IHC)

Product Details

Purpose:	BCAP31 / BAP31
Immunogen:	Peptide with sequence C-QAAVDGPMDDKKEE, from the C Terminus of the protein sequence according to NP_001132929.1, NP_005736.3.
Sequence:	QAAVDGPMDDK KEE
Isotype:	IgG
Specificity:	This antibody is expected to recognise isoform a (NP_001132929.1) and isoform b (NP_005736.3, NP_001132913.1).
Cross-Reactivity:	Cow, Dog, Human, Pig
Purification:	Purified from goat serum by ammonium sulphate precipitation followed by antigen affinity chromatography using the immunizing peptide.

Product Details

Grade: Verified

Target Details

Target: BCAP31

Alternative Name: BCAP31 ([BCAP31 Products](#))

Background: BCAP31, BAP31, DXS1357E, accessory protein BAP31, CDM, 6C6-AG, B-cell receptor-associated protein 31, CDM, 6C6 antigen, BCR-associated protein Bap31, OTTHUMP00000025978, p28 Bap31

Gene ID: 10134

NCBI Accession: [NP_001132929](#), [NP_005736](#)

Pathways: [Positive Regulation of Endopeptidase Activity](#)

Application Details

Application Notes: Immunohistochemistry: Paraffin embedded Human Kidney and Brain (Cerebellum and Cortex).
Recommended concentration: 3.75 µg/mL.
Western Blot: Approx 30 kDa band observed in Human Placenta and Brain lysate (predicted MW of 28 kDa according to NP_005736). Recommended for use at 1-3 µg/mL.
Peptide ELISA: antibody detection limit dilution 1:32000.

Restrictions: For Research Use only

Handling

Format: Liquid

Concentration: 0.5 mg/mL

Buffer: Supplied at 0.5 mg/mL in Tris saline, 0.02 % sodium azide, pH 7.3 with 0.5 % bovine serum albumin.

Preservative: Sodium azide

Precaution of Use: This product contains Sodium azide: a POISONOUS AND HAZARDOUS SUBSTANCE which should be handled by trained staff only.

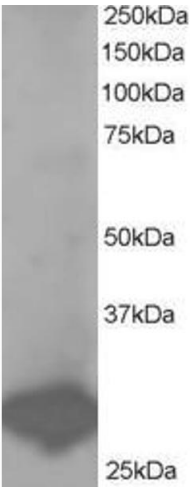
Handling Advice: Minimize freezing and thawing.

Storage: -20 °C

Handling

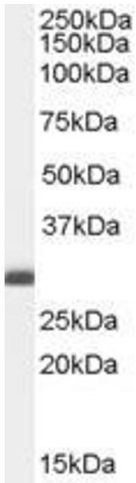
Storage Comment: Aliquot and store at -20°C, with minimal freeze/thawing. A working aliquot may be refrigerated at 4°C for a few weeks and still remain viable.

Images



Western Blotting

Image 1. ABIN184725 staining (1µg/ml) of Human Placenta lysate (RIPA buffer, 35µg total protein per lane). Primary incubated for 1 hour. Detected by western blot using chemiluminescence.



Western Blotting

Image 2. ABIN184725 (0.1µg/ml) staining of Human Breast lysate (35µg protein in RIPA buffer). Primary incubation was 1 hour. Detected by chemiluminescence.