

Datasheet for ABIN184726
anti-ADAM8 antibody (C-Term)[Go to Product page](#)

1 Image

Overview

Quantity:	100 µg
Target:	ADAM8
Binding Specificity:	C-Term
Reactivity:	Human
Host:	Goat
Clonality:	Polyclonal
Conjugate:	This ADAM8 antibody is un-conjugated
Application:	Western Blotting (WB), ELISA

Product Details

Purpose:	MS2 / ADAM8 / CD156
Immunogen:	Peptide with sequence C-QRKQGAGAPTAP, from the C Terminus of the protein sequence according to NP_001100.3, NP_001157962.1.
Sequence:	QRKQGAGAPT AP
Isotype:	IgG
Specificity:	This antibody is expected to recognise isoform 1 and 3 (NP_001100.3, NP_001157962.1).
Cross-Reactivity:	Human
Purification:	Purified from goat serum by ammonium sulphate precipitation followed by antigen affinity chromatography using the immunizing peptide.
Grade:	Verified

Target Details

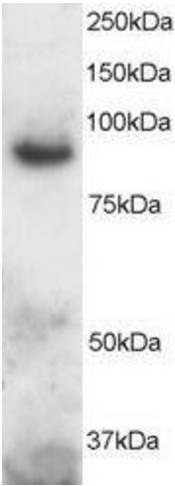
Target:	ADAM8
Alternative Name:	ADAM8 (ADAM8 Products)
Background:	ADAM8, CD156, a disintegrin and metalloproteinase domain 8, CD156 MS2, ADAM metalloproteinase domain 8, MGC134985, MS2, cell surface antigen MS2, disintegrin and metalloproteinase domain-containing protein 8, human leukocyte differentiation antigen
Gene ID:	101, 11501
NCBI Accession:	NP_001100 , NP_001157962
Pathways:	Activation of Innate immune Response , M Phase

Application Details

Application Notes:	Western Blot: Approx 100 kDa band observed in Human Bone Marrow and Peripheral Blood Mononucleocytes lysates (calculated MW of 88.8 kDa according to NP_001100.3). Recommended concentration: 1-3 µg/mL. Peptide ELISA: antibody detection limit dilution 1:16000.
Restrictions:	For Research Use only

Handling

Format:	Liquid
Concentration:	0.5 mg/mL
Buffer:	Supplied at 0.5 mg/mL in Tris saline, 0.02 % sodium azide, pH 7.3 with 0.5 % bovine serum albumin.
Preservative:	Sodium azide
Precaution of Use:	This product contains Sodium azide: a POISONOUS AND HAZARDOUS SUBSTANCE which should be handled by trained staff only.
Handling Advice:	Minimize freezing and thawing.
Storage:	-20 °C
Storage Comment:	Aliquot and store at -20°C, with minimal freeze/thawing. A working aliquot may be refrigerated at 4°C for a few weeks and still remain viable.



Western Blotting

Image 1. ABIN184726 staining (2µg/ml) of Human Brain lysate (RIPA buffer, 30µg total protein per lane). Primary incubated for 1 hour. Detected by western blot using chemiluminescence.