

Datasheet for ABIN1847268  
**anti-CD247 antibody (pTyr142)**



[Go to Product page](#)

2 Images

## Overview

Quantity:	100 µL
Target:	CD247
Binding Specificity:	pTyr142
Reactivity:	Human, Mouse
Host:	Rabbit
Clonality:	Polyclonal
Conjugate:	This CD247 antibody is un-conjugated
Application:	Western Blotting (WB), ELISA

## Product Details

Immunogen:	The antiserum was produced against synthesized phosphopeptide derived from human CD3 zeta around the phosphorylation site of tyrosine 142 (G-L-YP-Q-G).
Specificity:	Rabbit polyclonal antibody against CD3 zeta protein. Specificity is as follows for the reactive species: H:Y142, M:Y142, R:Y142
Purification:	The antibody was affinity-purified from rabbit antiserum by affinity-chromatography using epitope-specific immunogen

## Target Details

Target:	CD247
Alternative Name:	CD3 zeta ( <a href="#">CD247 Products</a> )
UniProt:	<a href="#">P20963</a>

Target Details

Pathways:

TCR Signaling, CXCR4-mediated Signaling Events, Ubiquitin Proteasome Pathway

Application Details

Restrictions:

For Research Use only

Handling

Format:

Liquid

Concentration:

1 mg/mL

Buffer:

PBS (without Mg<sup>2+</sup> and Ca<sup>2+</sup>), pH 7.4, 150 mM NaCl, 0.02 % sodium azide and 50 % glycerol.

Preservative:

Sodium azide, Without preservative

Precaution of Use:

This product contains Sodium azide: a POISONOUS AND HAZARDOUS SUBSTANCE which should be handled by trained staff only.

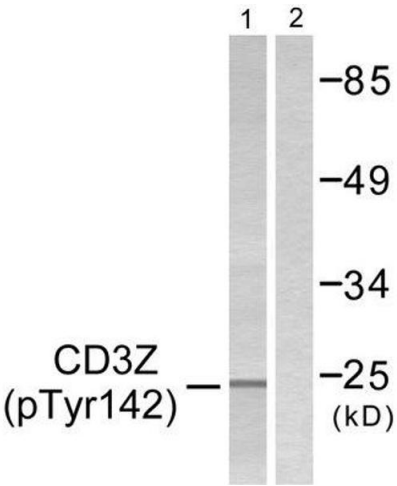
Storage:

-20 °C

Storage Comment:

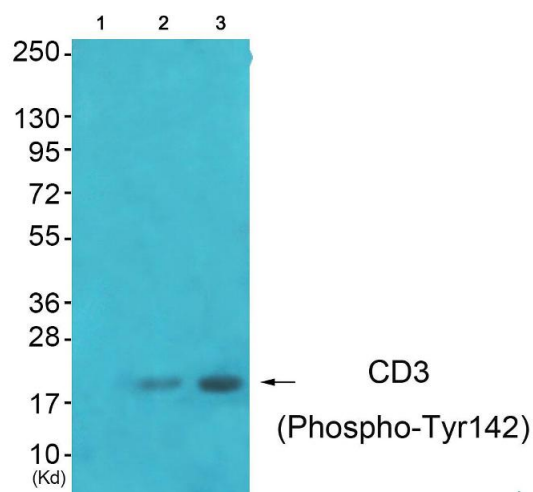
Aliquot and store at -20 °C. Avoid repeated freeze/thaw cycles.

Images



Western Blotting

Image 1.



Western Blotting

**Image 2.** Western blot analysis of extracts from JK cells (Lane 2) and K562 cells (Lane 3), using CD3 zeta (Phospho-Tyr142) antibody. Lane 1 is treated with blocking peptide.