



[Go to Product page](#)

Datasheet for ABIN184727
anti-KLF3 antibody (N-Term)

4 Images

Overview

Quantity:	100 µg
Target:	KLF3
Binding Specificity:	N-Term
Reactivity:	Human
Host:	Goat
Clonality:	Polyclonal
Conjugate:	This KLF3 antibody is un-conjugated
Application:	Western Blotting (WB), Immunofluorescence (IF), ELISA, Flow Cytometry (FACS)

Product Details

Purpose:	KLF3 / BKLF
Immunogen:	Peptide with sequence LMFDPVPVKQEAMD-C, from the N Terminus of the protein sequence according to NP_057615.3.
Sequence:	LMFDPVPVKQ EAMD
Isotype:	IgG
Cross-Reactivity:	Cow, Dog, Human, Mouse, Pig, Rat
Purification:	Purified from goat serum by ammonium sulphate precipitation followed by antigen affinity chromatography using the immunizing peptide.
Grade:	Verified

Target Details

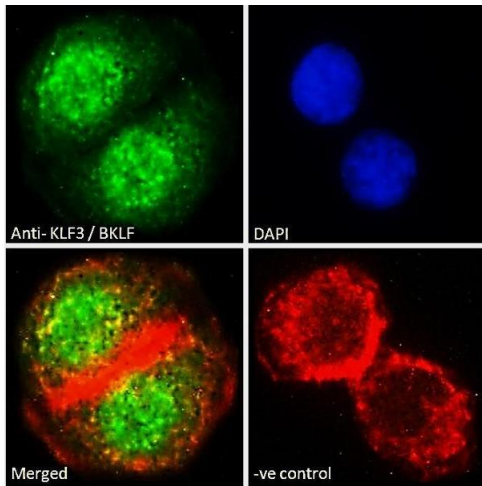
Target:	KLF3
Alternative Name:	KLF3 (KLF3 Products)
Background:	KLF3, BKLF, Kruppel-like factor 3 (basic), basic kruppel like factor, MGC48279
Gene ID:	51274
NCBI Accession:	NP_057615

Application Details

Application Notes:	Western Blot: Approx 38-40 kDa band observed in Human Heart lysates (predicted MW of 38.8Da according to NP_057615.3). Recommended concentration: 1-3 µg/mL. Primary incubation 1 hour at room temperature. Peptide ELISA: antibody detection limit dilution 1:32000.
Comment:	Immunofluorescence: Strong expression of the protein seen in the nuclei of A431 and A549 cells. Recommended concentration: 10µg/ml. Flow Cytometry: Flow cytometric analysis of A431 cells. Recommended concentration: 10u
Restrictions:	For Research Use only

Handling

Format:	Liquid
Concentration:	0.5 mg/mL
Buffer:	Supplied at 0.5 mg/mL in Tris saline, 0.02 % sodium azide, pH 7.3 with 0.5 % bovine serum albumin.
Preservative:	Sodium azide
Precaution of Use:	This product contains Sodium azide: a POISONOUS AND HAZARDOUS SUBSTANCE which should be handled by trained staff only.
Handling Advice:	Minimize freezing and thawing.
Storage:	-20 °C
Storage Comment:	Aliquot and store at -20°C, with minimal freeze/thawing. A working aliquot may be refrigerated at 4°C for a few weeks and still remain viable.



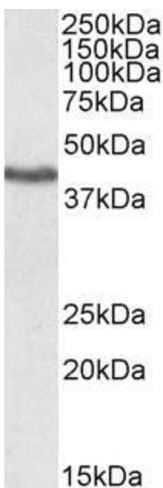
Immunofluorescence

Image 1. ABIN184727 Immunofluorescence analysis of paraformaldehyde fixed A549 cells, permeabilized with 0.15% Triton. Primary incubation 1hr (10ug/ml) followed by Alexa Fluor 488 secondary antibody (2ug/ml), showing nuclear staining. Actin filaments were stained with phalloidin (red) and the nuclear stain is DAPI (blue). Negative control: Unimmunized goat IgG (10ug/ml) followed by Alexa Fluor 488 secondary antibody (2ug/ml).



Western Blotting

Image 2. ABIN184727 staining (1µg/ml) of Human Heart lysate (RIPA buffer, 35µg total protein per lane). Primary incubated for 1 hour. Detected by western blot using chemiluminescence.



Western Blotting

Image 3. ABIN184727 (1µg/ml) staining of Human Heart lysate. (35µg protein in RIPA buffer). Detected by chemiluminescence.

Please check the [product details page](#) for more images. Overall 4 images are available for ABIN184727.