

Datasheet for ABIN184730  
**anti-IRF6 antibody (C-Term)**[Go to Product page](#)

## 4 Images

## Overview

Quantity:	100 µg
Target:	IRF6
Binding Specificity:	C-Term
Reactivity:	Human
Host:	Goat
Clonality:	Polyclonal
Conjugate:	This IRF6 antibody is un-conjugated
Application:	Western Blotting (WB), Immunohistochemistry (IHC), ELISA

## Product Details

Purpose:	IRF6
Immunogen:	Peptide with sequence C-TPSMLPPLPPQ, from the C Terminus of the protein sequence according to NP_006138.1.
Sequence:	TPSMLPPL PPQ
Isotype:	IgG
Cross-Reactivity:	Human
Purification:	Purified from goat serum by ammonium sulphate precipitation followed by antigen affinity chromatography using the immunizing peptide.
Grade:	Verified

## Target Details

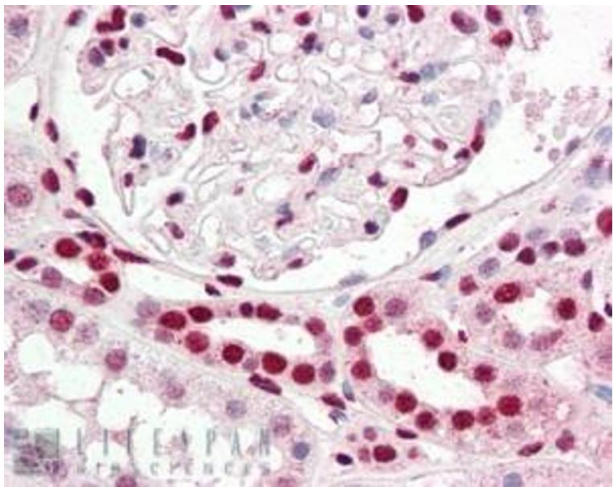
Target:	IRF6
Alternative Name:	IRF6 ( <a href="#">IRF6 Products</a> )
Background:	IRF6, interferon regulatory factor 6, LPS, PIT, PPS, VWS, OFC6
Gene ID:	3664, 54139
NCBI Accession:	<a href="#">NP_006138</a>

## Application Details

Application Notes:	<p>Immunohistochemistry: Paraffin embedded Human Kidney. Recommended concentration: 5 µg/mL.</p> <p>Western Blot: Approx 58-60 kDa band observed in Human Ovary and approx. 60 kDa in Human Kidney lysates (calculated MW of 53.1 kDa according to NP_006138.1). The observed molecular weight corresponds to different antibodies from other commercial sources. Reco</p> <p>Peptide ELISA: antibody detection limit dilution 1:4000.</p>
Restrictions:	For Research Use only

## Handling

Format:	Liquid
Concentration:	0.5 mg/mL
Buffer:	Supplied at 0.5 mg/mL in Tris saline, 0.02 % sodium azide, pH 7.3 with 0.5 % bovine serum albumin.
Preservative:	Sodium azide
Precaution of Use:	This product contains Sodium azide: a POISONOUS AND HAZARDOUS SUBSTANCE which should be handled by trained staff only.
Handling Advice:	Minimize freezing and thawing.
Storage:	-20 °C
Storage Comment:	Aliquot and store at -20°C, with minimal freeze/thawing. A working aliquot may be refrigerated at 4°C for a few weeks and still remain viable.



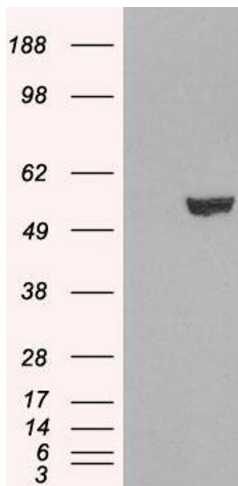
#### Immunohistochemistry

**Image 1.** ABIN184730 (2.5µg/ml) staining of paraffin embedded Human Kidney. Steamed antigen retrieval with citrate buffer pH 6, AP-staining.



#### Western Blotting

**Image 2.** ABIN184730 staining (0.2µg/ml) of Human Ovary lysate (RIPA buffer, 35µg total protein per lane). Primary incubated for 1 hour. Detected by chemiluminescence.



#### Western Blotting

**Image 3.** HEK293 overexpressing IRF6 (ABIN5352639) and probed with ABIN184730 (mock transfection in first lane).

Please check the [product details page](#) for more images. Overall 4 images are available for ABIN184730.