

Datasheet for ABIN184733  
**anti-Septin 3 antibody (N-Term)**

## 4 Images

[Go to Product page](#)

## Overview

Quantity:	100 µg
Target:	Septin 3 (SEPT3)
Binding Specificity:	N-Term
Reactivity:	Human, Mouse, Rat
Host:	Goat
Clonality:	Polyclonal
Conjugate:	This Septin 3 antibody is un-conjugated
Application:	Western Blotting (WB), ELISA, Immunohistochemistry (IHC)

## Product Details

Purpose:	Septin 3
Immunogen:	Peptide with sequence SELVPEPRPKPA-C, from the N Terminus of the protein sequence according to NP_663786.1, NP_061979.3.
Sequence:	SELVPEPRPK PA
Isotype:	IgG
Specificity:	This antibody is expected to recognize both reported isoforms according to NP_663786.2 and NP_061979.3.
Cross-Reactivity:	Cow, Dog, Human, Mouse, Pig, Rat
Purification:	Purified from goat serum by ammonium sulphate precipitation followed by antigen affinity chromatography using the immunizing peptide.

## Product Details

Grade: Verified

## Target Details

Target:	Septin 3 (SEPT3)
Alternative Name:	SEPT3 ( <a href="#">SEPT3 Products</a> )
Background:	SEPT3, septin 3, SEP3, CTA-250D10.3, MGC133218, bK250D10.3, OTTHUMP00000028742, neuronal-specific septin 3, G-Septin
Gene ID:	55964, 24050
NCBI Accession:	<a href="#">NP_663786</a> , <a href="#">NP_061979</a>
Pathways:	<a href="#">Negative Regulation of intrinsic apoptotic Signaling</a>

## Application Details

Application Notes:	Immunohistochemistry: Paraffin embedded Human Brain (Cortex) and (Cerebellum) and Testis. Recommended concentration: 3.75 µg/mL.  Western Blot: Approx 40 kDa band observed in Human Cerebellum and in Mouse and Rat Brain lysates (calculated MW of 40.7 kDa according to Human NP_663786.2 and Rat NP_062248.2, and 40.6 kDa according to Mouse NP_001345765.1). Recommended concentration: 0.03- Peptide ELISA: antibody detection limit dilution 1:32000.
Restrictions:	For Research Use only

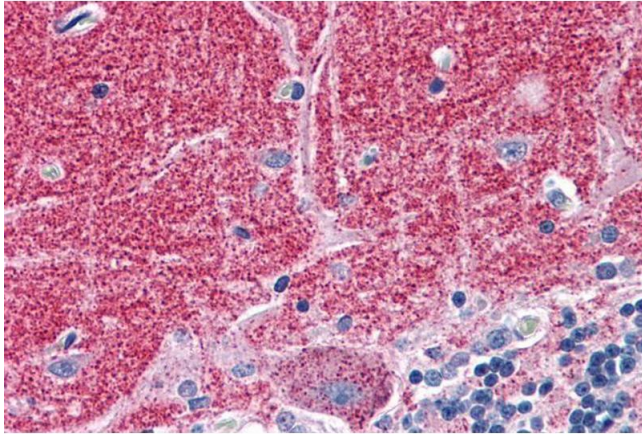
## Handling

Format:	Liquid
Concentration:	0.5 mg/mL
Buffer:	Supplied at 0.5 mg/mL in Tris saline, 0.02 % sodium azide, pH 7.3 with 0.5 % bovine serum albumin.
Preservative:	Sodium azide
Precaution of Use:	This product contains Sodium azide: a POISONOUS AND HAZARDOUS SUBSTANCE which should be handled by trained staff only.
Handling Advice:	Minimize freezing and thawing.
Storage:	-20 °C

## Handling

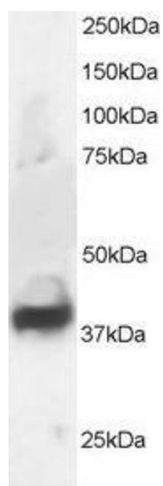
**Storage Comment:** Aliquot and store at -20°C, with minimal freeze/thawing. A working aliquot may be refrigerated at 4°C for a few weeks and still remain viable.

## Images



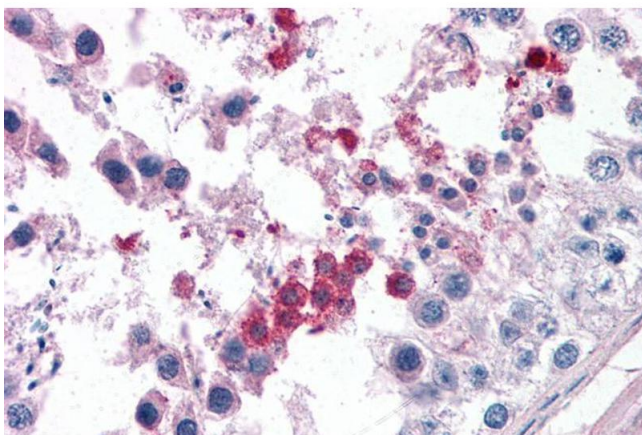
### Immunohistochemistry

**Image 1.** ABIN184733 (3.75µg/ml) staining of paraffin embedded Human Cerebellum. Steamed antigen retrieval with citrate buffer pH 6, AP-staining.



### Western Blotting

**Image 2.** ABIN184733 staining (1µg/ml) of Human Brain lysate (RIPA buffer, 30µg total protein per lane). Primary incubated for 1 hour. Detected by chemiluminescence.



### Immunohistochemistry

**Image 3.** ABIN184733 (3.75µg/ml) staining of paraffin embedded Human Testis. Steamed antigen retrieval with citrate buffer pH 6, AP-staining.

Please check the [product details page](#) for more images. Overall 4 images are available for ABIN184733.