

Datasheet for ABIN1847362
anti-EPHA2/3 antibody (pTyr588, pTyr596)



[Go to Product page](#)

3 Images

Overview

Quantity:	100 µL
Target:	EPHA2/3
Binding Specificity:	pTyr588, pTyr596
Reactivity:	Human, Rat
Host:	Rabbit
Clonality:	Polyclonal
Conjugate:	This EPHA2/3 antibody is un-conjugated
Application:	Western Blotting (WB), ELISA, Immunofluorescence (fixed cells) (IF/ICC)

Product Details

Immunogen:	The antiserum was produced against synthesized phosphopeptide derived from human EPHA2/3/4 around the phosphorylation site of tyrosine 588/596 (T-YP-V-D-P).
Specificity:	Rabbit polyclonal antibody against EPHA2/3 protein. Specificity is as follows for the reactive species: H:Y588/Y596M:Y589/Y596, R:-/Y597
Purification:	The antibody was affinity-purified from rabbit antiserum by affinity-chromatography using epitope-specific immunogen

Target Details

Target:	EPHA2/3
Abstract:	EPHA2/3 Products
UniProt:	P29317 , P29320 , P54764

Application Details

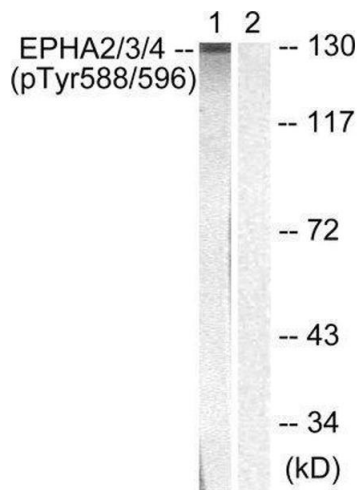
Restrictions: For Research Use only

Handling

Storage: -20 °C

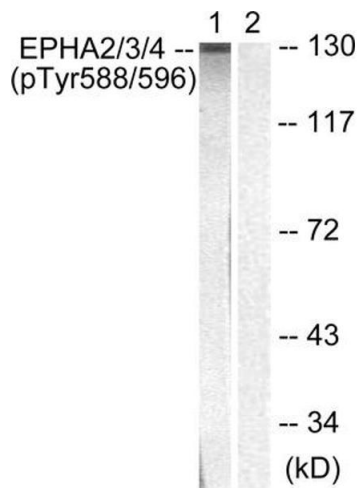
Storage Comment: Aliquot and store at -20 °C. Avoid repeated freeze/thaw cycles.

Images



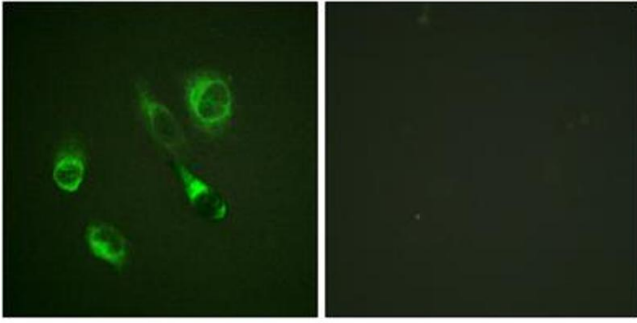
Western Blotting

Image 1.



Western Blotting

Image 2. Western blot analysis of extracts from HepG2 cells, using EPHA2/3/4 (Phospho-Tyr588/596) antibody.



Immunofluorescence

Image 3. Immunofluorescence analysis of HeLa cells, using EPHA2/3/4 (Phospho-Tyr588/596) antibody.