

Datasheet for ABIN184738
anti-Iba1 antibody (C-Term)

41 Images

[Go to Product page](#)

Overview

Quantity:	100 µg
Target:	Iba1 (IBA1)
Binding Specificity:	C-Term
Reactivity:	Human, Rat, Mouse
Host:	Goat
Clonality:	Polyclonal
Conjugate:	This Iba1 antibody is un-conjugated
Application:	Western Blotting (WB), Immunohistochemistry (IHC), ELISA

Product Details

Purpose:	AIF1/IBA1 isoform 1 and 3
Immunogen:	Peptide with sequence C-TGPPAKKAISELP, from the C Terminus of the protein sequence according to NP_116573.1, NP_001614.3.
Sequence:	TGPPAKKAIS ELP
Isotype:	IgG
Specificity:	This antibody is expected to recognize isoform 1 (NP_116573.1) and isoform 3 (NP_001614.3).
Cross-Reactivity:	Human, Mouse, Pig, Rat
Purification:	Purified from goat serum by ammonium sulphate precipitation followed by antigen affinity chromatography using the immunizing peptide.
Grade:	Verified

Target Details

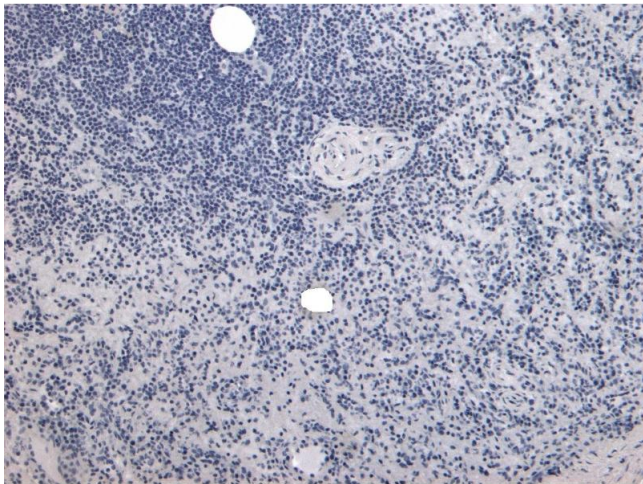
Target:	Iba1 (IBA1)
Alternative Name:	AIF1 (IBA1 Products)
Background:	AIF1, IBLY409840A1, allograft inflammatory factor 1, AIF-1, IRT-1, interferon gamma responsive transcript, ionized calcium-binding adapter molecule, Daintain, DADB-70P7.8
Gene ID:	199, 11629, 29427
NCBI Accession:	NP_116573 , NP_001614
Pathways:	Smooth Muscle Cell Migration

Application Details

Application Notes:	Immunohistochemistry: Paraffin embedded Human Spleen. Recommended concentration: 6-8 µg/mL. Western Blot: Approx. 16-17 kDa band observed in Human Frontal Cortex and in Mouse and Rat Brain lysates (calculated MW of 16.7 kDa according to Human NP_001614.3, 16.9 kDa according to Mouse NP_062340.1 and 16.8 kDa according to Rat NP_058892.1). Recommended Peptide ELISA: antibody detection limit dilution 1:64000.
Restrictions:	For Research Use only

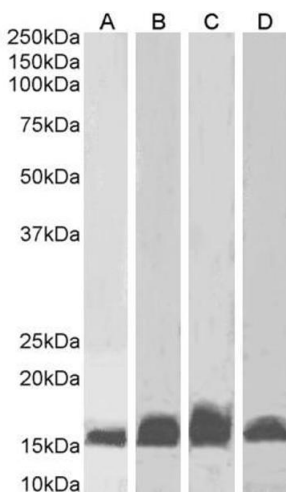
Handling

Format:	Liquid
Concentration:	0.5 mg/mL
Buffer:	Supplied at 0.5 mg/mL in Tris saline, 0.02 % sodium azide, pH 7.3 with 0.5 % bovine serum albumin.
Preservative:	Sodium azide
Precaution of Use:	This product contains Sodium azide: a POISONOUS AND HAZARDOUS SUBSTANCE which should be handled by trained staff only.
Handling Advice:	Minimize freezing and thawing.
Storage:	-20 °C
Storage Comment:	Aliquot and store at -20°C, with minimal freeze/thawing. A working aliquot may be refrigerated at 4°C for a few weeks and still remain viable.



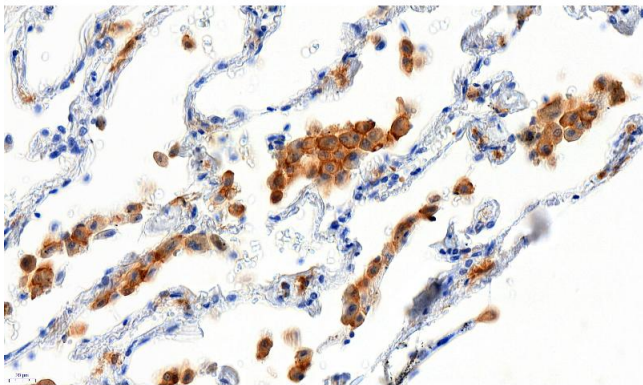
Immunohistochemistry

Image 1. (ABIN184738) Negative Control showing staining of paraffin embedded Human Spleen, with no primary antibody.



Western Blotting

Image 2. ABIN184738 (1µg/ml) staining of Human Frontal Cortex (A), Rat Brain (B), Mouse (C) Brain and Pig Brain (D) lysates (35µg protein in RIPA buffer). Detected by chemiluminescence.



Immunohistochemistry

Image 3. ABIN184738 (5µg/ml) staining of paraffin embedded Human Lung. Heat induced antigen retrieval with citrate buffer pH 6, HRP-staining. This data is from a previous batch, not on sale.

Please check the [product details page](#) for more images. Overall 41 images are available for ABIN184738.