

Datasheet for ABIN184739  
**anti-RGS1 antibody (C-Term)**

## 3 Images

[Go to Product page](#)

## Overview

Quantity:	100 µg
Target:	RGS1
Binding Specificity:	C-Term
Reactivity:	Human
Host:	Goat
Clonality:	Polyclonal
Conjugate:	This RGS1 antibody is un-conjugated
Application:	Western Blotting (WB), ELISA, Immunohistochemistry (IHC)

## Product Details

Purpose:	RGS1 / 1R20
Immunogen:	Peptide with sequence C-NLLNDLQANSLK, from the C Terminus of the protein sequence according to NP_002913.3.
Sequence:	NLLNDLQANS LK
Isotype:	IgG
Cross-Reactivity:	Cow, Dog, Human, Mouse, Rat
Purification:	Purified from goat serum by ammonium sulphate precipitation followed by antigen affinity chromatography using the immunizing peptide.
Grade:	Verified

## Target Details

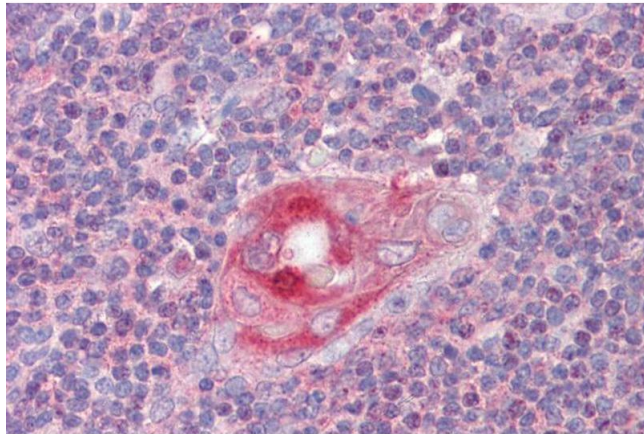
Target:	RGS1
Alternative Name:	RGS1 ( <a href="#">RGS1 Products</a> )
Background:	RGS1, 1R20, regulator of G-protein signalling 1, BL34, IER1, IR20, 1R20, Regulator of G-protein signaling 1, B-cell activation protein BL34, early response protein 1R20, immediate-early response 1, B-cell specific
Gene ID:	5996, 50778
NCBI Accession:	<a href="#">NP_002913</a>
Pathways:	<a href="#">MAPK Signaling</a> , <a href="#">Myometrial Relaxation and Contraction</a> , <a href="#">Regulation of G-Protein Coupled Receptor Protein Signaling</a> , <a href="#">CXCR4-mediated Signaling Events</a>

## Application Details

Application Notes:	Immunohistochemistry: Paraffin embedded Human Thymus and Small Intestine. Recommended concentration: 2.5 µg/mL. Western Blot: Approx 25 kDa band seen in HepG2 lysate. Recommended for use at 0.5-2 µg/mL. Peptide ELISA: antibody detection limit dilution 1:32000.
Restrictions:	For Research Use only

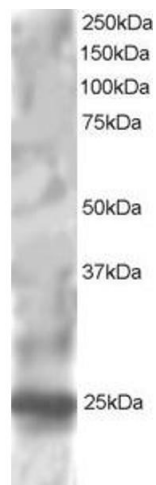
## Handling

Format:	Liquid
Concentration:	0.5 mg/mL
Buffer:	Supplied at 0.5 mg/mL in Tris saline, 0.02 % sodium azide, pH 7.3 with 0.5 % bovine serum albumin.
Preservative:	Sodium azide
Precaution of Use:	This product contains Sodium azide: a POISONOUS AND HAZARDOUS SUBSTANCE which should be handled by trained staff only.
Handling Advice:	Minimize freezing and thawing.
Storage:	-20 °C
Storage Comment:	Aliquot and store at -20°C, with minimal freeze/thawing. A working aliquot may be refrigerated at 4°C for a few weeks and still remain viable.



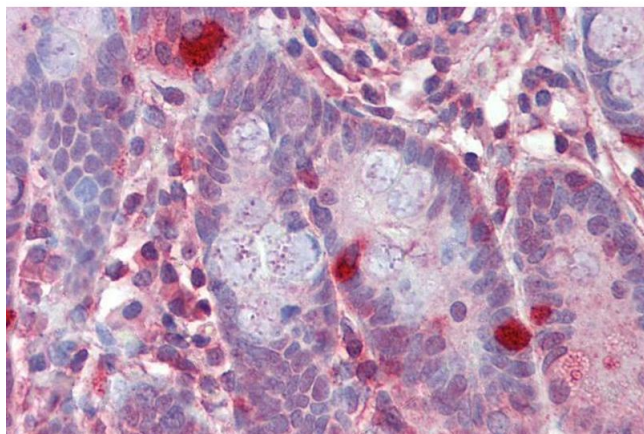
#### Immunohistochemistry

**Image 1.** ABIN184739 (2.5µg/ml) staining of paraffin embedded Human Thymus. Steamed antigen retrieval with citrate buffer pH 6, AP-staining.



#### Western Blotting

**Image 2.** ABIN184739 staining (1µg/ml) of HepG2 lysate (RIPA buffer, 30µg total protein per lane). Primary incubated for 1 hour. Detected by chemiluminescence.



#### Immunohistochemistry

**Image 3.** ABIN184739 (2.5µg/ml) staining of paraffin embedded Human Small Intestine. Steamed antigen retrieval with citrate buffer pH 6, AP-staining.