

Datasheet for ABIN184741
anti-TFEB antibody (N-Term)

8 Images

[Go to Product page](#)

Overview

Quantity:	100 µg
Target:	TFEB
Binding Specificity:	N-Term
Reactivity:	Human
Host:	Goat
Clonality:	Polyclonal
Conjugate:	This TFEB antibody is un-conjugated
Application:	Western Blotting (WB), ELISA

Product Details

Purpose:	TFEB (N Terminus)
Immunogen:	Peptide with sequence ASRIGLRMQLMRE-C, from the N Terminus of the protein sequence according to NP_009093.1.
Sequence:	ASRIGLRMQL MRE
Isotype:	IgG
Cross-Reactivity:	Cow, Dog, Human, Mouse, Pig, Rat
Purification:	Purified from goat serum by ammonium sulphate precipitation followed by antigen affinity chromatography using the immunizing peptide.
Grade:	Verified

Target Details

Target:	TFEB
Alternative Name:	TFEB (TFEB Products)
Background:	TFEB, transcription factor EB, TCFEF, T-cell transcription factor EB, RP4-696P19.3, AlphaTFEB, TCFEF, bHLHe35, OTTHUMP00000043540,
Gene ID:	7942, 21425
NCBI Accession:	NP_009093 , NP_001161299 , NP_001258872

Application Details

Application Notes:	Western Blot: Approx 55 kDa band observed in Human Thymus and in lysates of cell line HepG2, and approx 60 kDa in lysates of cell line Daudi (calculated MW of 54.2 kDa according to NP_001161299.2). Recommended concentration :0.3-1 µg/mL. Primary incubation 1 Peptide ELISA: antibody detection limit dilution 1:64000.
Restrictions:	For Research Use only

Handling

Format:	Liquid
Concentration:	0.5 mg/mL
Buffer:	Supplied at 0.5 mg/mL in Tris saline, 0.02 % sodium azide, pH 7.3 with 0.5 % bovine serum albumin.
Preservative:	Sodium azide
Precaution of Use:	This product contains Sodium azide: a POISONOUS AND HAZARDOUS SUBSTANCE which should be handled by trained staff only.
Handling Advice:	Minimize freezing and thawing.
Storage:	-20 °C
Storage Comment:	Aliquot and store at -20°C, with minimal freeze/thawing. A working aliquot may be refrigerated at 4°C for a few weeks and still remain viable.



Western Blotting

Image 1. (ABIN184741) (1.0 µg/mL) staining of Human Thymus lysate (35 µg protein in RIPA buffer). Detected by chemiluminescence.

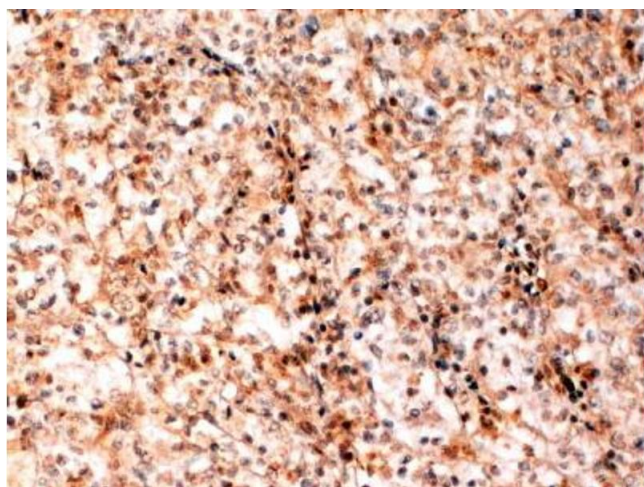


Image 2. ABIN184741 (2 µg/mL) staining of paraffin embedded Human Kidney cancer. Steamed antigen retrieval with citrate buffer pH 6, HRP-staining.

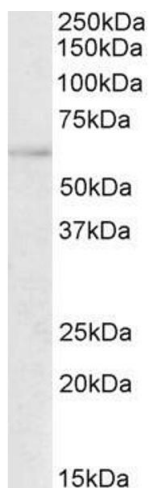


Image 3. ABIN184741 (0.5 µg/mL) staining of Human Thymus lysate (35 µg protein in RIPA buffer). Primary incubation was 1 hour. Detected by chemiluminescence.

Please check the [product details page](#) for more images. Overall 8 images are available for ABIN184741.