

Datasheet for ABIN184743
anti-DAP3 antibody (C-Term)[Go to Product page](#)

9 Images

Overview

Quantity:	100 µg
Target:	DAP3
Binding Specificity:	C-Term
Reactivity:	Human
Host:	Goat
Clonality:	Polyclonal
Conjugate:	This DAP3 antibody is un-conjugated
Application:	Western Blotting (WB), ELISA, Immunohistochemistry (IHC), Immunofluorescence (IF)

Product Details

Purpose:	DAP3
Immunogen:	Peptide with sequence NPSLLERHCAYL, from the C Terminus of the protein sequence according to NP_387506.1, NP_001186779.1, NP_001186780.1.
Sequence:	NPSLLERHCA YL
Isotype:	IgG
Specificity:	This antibody is expected to recognise isoform 1 (NP_387506.1), isoform 2 (NP_001186779.1) and isoform 3 (NP_001186780.1). Reported variants represent identical protein (NP_387506.1, NP_004623.1, NP_001186778.1).
Cross-Reactivity:	Human
Purification:	Purified from goat serum by ammonium sulphate precipitation followed by antigen affinity

Product Details

chromatography using the immunizing peptide.

Grade: Verified

Target Details

Target: DAP3

Alternative Name: DAP3 ([DAP3 Products](#))

Background: DAP3, death associated protein 3, DAP-3, DKFZp686G12159, MGC126058, MGC126059, MRP-S29, MRPS29, bMRP-10, death-associated protein 3, mitochondrial 28S ribosomal protein S29

Gene ID: 7818

NCBI Accession: [NP_387506](#), [NP_001186779](#), [NP_001186780](#)

Application Details

Application Notes: Immunohistochemistry: Paraffin embedded Human Kidney. Recommended concentration: 5 µg/mL.

Western Blot: Approx 40 kDa band observed in lysates of cell lines HeLa and HepG2 and in Human Kidney lysates (calculated MW of 41 kDa according to NP_001186779.1 and NP_001186780). Recommended concentration: 0.1-1 µg/mL. Primary incubated 1 hour at room

Peptide ELISA: antibody detection limit dilution 1:64000.

Comment: **Immunofluorescence:** Strong expression of the protein seen in the nuclei of MCF7 cells.

Recommended concentration: 10µg/ml.

Restrictions: For Research Use only

Handling

Format: Liquid

Concentration: 0.5 mg/mL

Buffer: Supplied at 0.5 mg/mL in Tris saline, 0.02 % sodium azide, pH 7.3 with 0.5 % bovine serum albumin.

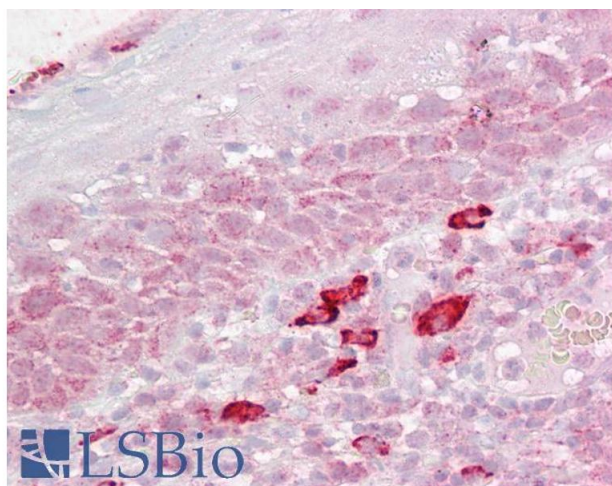
Preservative: Sodium azide

Precaution of Use: This product contains Sodium azide: a POISONOUS AND HAZARDOUS SUBSTANCE which should be handled by trained staff only.

Handling

Handling Advice:	Minimize freezing and thawing.
Storage:	-20 °C
Storage Comment:	Aliquot and store at -20°C, with minimal freeze/thawing. A working aliquot may be refrigerated at 4°C for a few weeks and still remain viable.

Images



Immunohistochemistry

Image 1. ABIN184743 (2.5µg/ml) staining of paraffin embedded Human Tonsil. Steamed antigen retrieval with citrate buffer pH 6, AP-staining. This data is from a previous batch, not on sale.

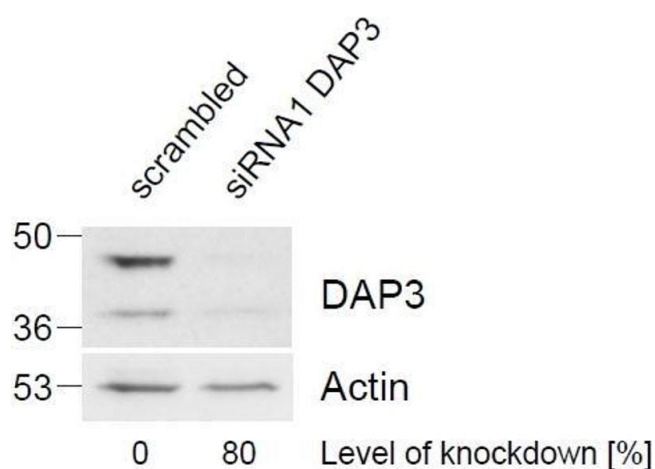


Image 2. ABIN184743 (1 µg/mL) staining of HeLa lysate (control in left lane and after si-RNA-mediated DAP3 knock-down expression in right lane) (35 µg protein in RIPA buffer). Level of knock-down relative to Actin expression level was determined by RT-PCR. Primary incubation was 1 hour. Detected by chemiluminescence.

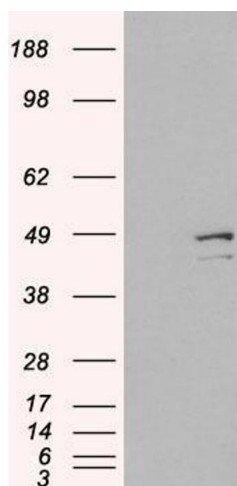


Image 3. HEK293 overexpressing DAP3 (RC223182) and probed with ABIN184743 (mock transfection in first lane), tested by Origene.

Please check the [product details page](#) for more images. Overall 9 images are available for ABIN184743.