

Datasheet for ABIN184744  
**anti-CST3 antibody (C-Term)**

2 Images



[Go to Product page](#)

## Overview

Quantity:	100 µg
Target:	CST3
Binding Specificity:	C-Term
Reactivity:	Mouse
Host:	Goat
Clonality:	Polyclonal
Conjugate:	This CST3 antibody is un-conjugated
Application:	Western Blotting (WB), ELISA

## Product Details

Purpose:	Cystatin 3 (mouse)
Immunogen:	Peptide with sequence GTHSLTKFSCKNA, from the C Terminus of the protein sequence according to NP_034106.2.
Sequence:	GTHSLTKFSC KNA
Isotype:	IgG
Cross-Reactivity:	Mouse
Purification:	Purified from goat serum by ammonium sulphate precipitation followed by antigen affinity chromatography using the immunizing peptide.
Grade:	Verified

## Target Details

---

Target:	CST3
Alternative Name:	Cst3 ( <a href="#">CST3 Products</a> )
Background:	Cst3, cystatin 3, gamma-trace, CST3, AD8, cystatin C (amyloid angiopathy and cerebral hemorrhage), post-gamma-globulin, neuroendocrine basic polypeptide, RP23-250M11.9, CysC, OTTMUSP00000016736
Gene ID:	13010
NCBI Accession:	<a href="#">NP_034106</a>

## Application Details

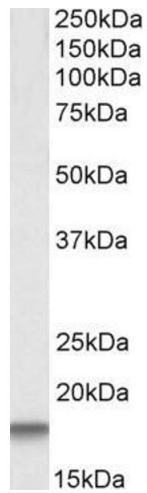
---

Application Notes:	Western Blot: Approx 18 kDa band observed in Mouse Testis lysates (calculated MW of 15.5 kDa according to NP_034106.2). Recommended concentration: 0.01-0.03 µg/mL. Peptide ELISA: antibody detection limit dilution 1:8000.
Restrictions:	For Research Use only

## Handling

---

Format:	Liquid
Concentration:	0.5 mg/mL
Buffer:	Supplied at 0.5 mg/mL in Tris saline, 0.02 % sodium azide, pH 7.3 with 0.5 % bovine serum albumin.
Preservative:	Sodium azide
Precaution of Use:	This product contains Sodium azide: a POISONOUS AND HAZARDOUS SUBSTANCE which should be handled by trained staff only.
Handling Advice:	Minimize freezing and thawing.
Storage:	-20 °C
Storage Comment:	Aliquot and store at -20°C, with minimal freeze/thawing. A working aliquot may be refrigerated at 4°C for a few weeks and still remain viable.



#### Western Blotting

**Image 1.** ABIN184744 (0.01 $\mu$ g/ml) staining of Mouse Testis lysate (35 $\mu$ g protein in RIPA buffer). Primary incubation was 1 hour. Detected by chemiluminescence.



#### Western Blotting

**Image 2.** ABIN184744 staining (2 $\mu$ g/ml) of mouse kidney lysate (RIPA buffer, 30 $\mu$ g total protein per lane). Primary incubated for 1 hour. Detected by western blot using chemiluminescence.