

Datasheet for ABIN184748
anti-ARPC2 antibody (C-Term)

4 Images

1 Publication

[Go to Product page](#)

Overview

Quantity:	100 µg
Target:	ARPC2
Binding Specificity:	C-Term
Reactivity:	Human
Host:	Goat
Clonality:	Polyclonal
Conjugate:	This ARPC2 antibody is un-conjugated
Application:	Western Blotting (WB), ELISA, Immunohistochemistry (IHC), Immunofluorescence (IF)

Product Details

Purpose:	ARPC2
Immunogen:	Peptide with sequence C-EMKTITGKTFSSR, from the C Terminus of the protein sequence according to NP_005722.1, NP_690601.1.
Sequence:	EMKTITGKTF SSR
Isotype:	IgG
Specificity:	The reported variants NP_005722.1 and NP_690601.1 represent identical protein.
Cross-Reactivity:	Cow, Dog, Human, Mouse, Rat
Purification:	Purified from goat serum by ammonium sulphate precipitation followed by antigen affinity chromatography using the immunizing peptide.
Grade:	Verified

Target Details

Target:	ARPC2
Alternative Name:	ARPC2 (ARPC2 Products)
Background:	ARPC2, actin related protein 2/3 complex, subunit 2, 34 kDa, ARC34, PRO2446, p34-Arc, PNAS-139, ARP2/3 protein complex subunit 34, actin related protein 2/3 complex subunit 2
Gene ID:	10109, 76709
NCBI Accession:	NP_005722 , NP_690601
Pathways:	RTK Signaling , Regulation of Actin Filament Polymerization

Application Details

Application Notes:	Immunohistochemistry: In paraffin embedded Human Spleen shows cytoplasm staining in some splenocytes in and around a T-cell area. Recommended concentration, 3-5 µg/mL. Western Blot: Approx 34-35 kDa band observed in lysates of cell lines CACO-2, HeLa and Jurkat (calculated MW of 34.3 kDa according to NP_005722.1). Recommended concentration: 0.1-0.5 µg/mL. Primary incubation 1 hour at room temperature. Peptide ELISA: antibody detection limit dilution 1:32000.
Comment:	Immunofluorescence: Strong expression of the protein seen in the cytoplasm of A431 and HeLa cells. Recommended concentration: 10µg/ml.
Restrictions:	For Research Use only

Handling

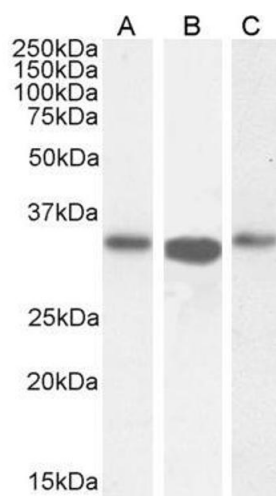
Format:	Liquid
Concentration:	0.5 mg/mL
Buffer:	Supplied at 0.5 mg/mL in Tris saline, 0.02 % sodium azide, pH 7.3 with 0.5 % bovine serum albumin.
Preservative:	Sodium azide
Precaution of Use:	This product contains Sodium azide: a POISONOUS AND HAZARDOUS SUBSTANCE which should be handled by trained staff only.
Handling Advice:	Minimize freezing and thawing.
Storage:	-20 °C
Storage Comment:	Aliquot and store at -20°C, with minimal freeze/thawing. A working aliquot may be refrigerated

at 4°C for a few weeks and still remain viable.

Publications

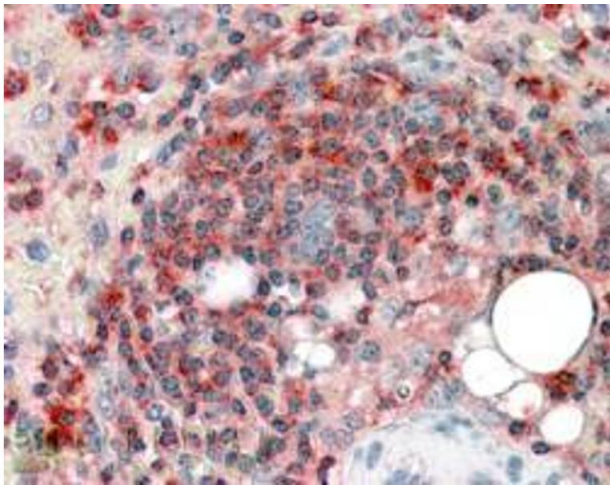
Product cited in: Sakata, Taniguchi, Yasuda, Adachi-Morishima, Hamazaki, Nakayama, Miki, Minato, Narumiya: " Impaired T lymphocyte trafficking in mice deficient in an actin-nucleating protein, mDia1." in: **The Journal of experimental medicine**, Vol. 204, Issue 9, pp. 2031-8, (2007) ([PubMed](#)).

Images



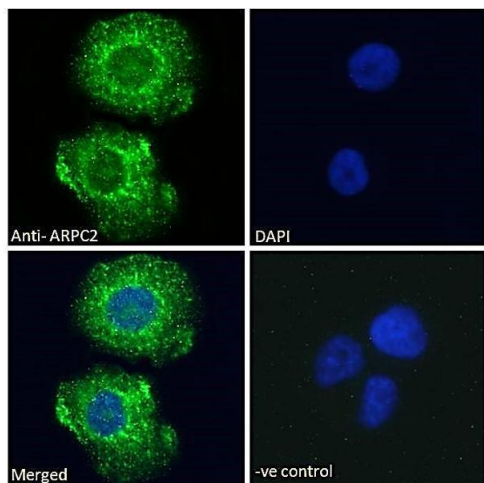
Western Blotting

Image 1. ABIN184748 (0.5µg/ml) staining of CACO-2 (A), (0.1ug/ml) HeLa (B) and Jurkat (C) lysate (35µg protein in RIPA buffer). Detected by chemiluminescence.



Immunohistochemistry

Image 2. ABIN184748 (3.8µg/ml) staining of paraffin embedded Human Spleen. Steamed antigen retrieval with citrate buffer pH 6, AP-staining.



Immunofluorescence

Image 3. ABIN184748 Immunofluorescence analysis of paraformaldehyde fixed A431 cells, permeabilized with 0.15% Triton. Primary incubation 1hr (10ug/ml) followed by Alexa Fluor 488 secondary antibody (2ug/ml), showing cytoplasmic staining. The nuclear stain is DAPI (b

Please check the [product details page](#) for more images. Overall 4 images are available for ABIN184748.