

Datasheet for ABIN184750

anti-ARPC1B antibody (N-Term)**2** Images[Go to Product page](#)

Overview

Quantity:	100 µg
Target:	ARPC1B
Binding Specificity:	N-Term
Reactivity:	Human
Host:	Goat
Clonality:	Polyclonal
Conjugate:	This ARPC1B antibody is un-conjugated
Application:	Western Blotting (WB), ELISA, Immunohistochemistry (IHC)

Product Details

Purpose:	ARP2/3 subunit 1B
Immunogen:	Peptide with sequence AYHSFLVEPISCH, from the N Terminus of the protein sequence according to NP_005711.1.
Sequence:	AYHSFLVEPI SCH
Isotype:	IgG
Cross-Reactivity:	Cow, Dog, Human, Mouse, Pig, Rat
Purification:	Purified from goat serum by ammonium sulphate precipitation followed by antigen affinity chromatography using the immunizing peptide.
Grade:	Verified

Target Details

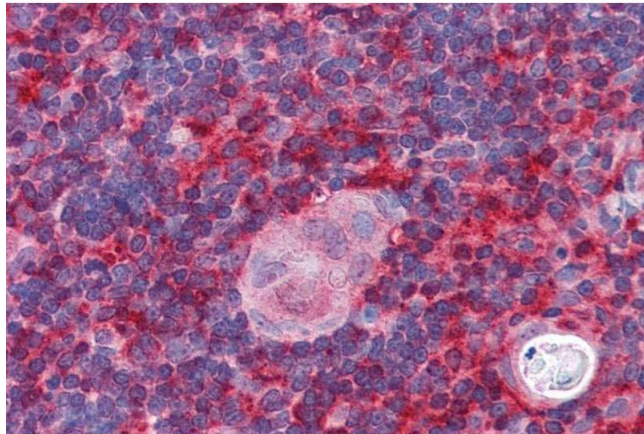
Target:	ARPC1B
Alternative Name:	ARPC1B (ARPC1B Products)
Background:	ARPC1B, actin related protein 2/3 complex, subunit 1B, 41 kDa, ARC41, p40-ARC, p41-ARC, ARP2/3 protein complex subunit p41, actin related protein 2/3 complex, subunit 1A (41 kD), OTTHUMP00000206020
Gene ID:	10095
NCBI Accession:	NP_005711
Pathways:	RTK Signaling , Regulation of Actin Filament Polymerization

Application Details

Application Notes:	<p>Immunohistochemistry: Paraffin embedded Human Thymus. Recommended concentration: 5 µg/mL.</p> <p>Western Blot: Approx 37 kDa band observed in Human Liver lysates (calculated MW of 40.9 kDa according to NP_005711). Recommended concentration: 2-4 µg/mL. A minor band of unknown identity was also consistently observed at 28 kDa.</p> <p>Peptide ELISA: antibody detection limit dilution 1:32000.</p>
Restrictions:	For Research Use only

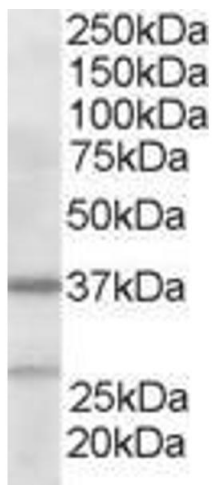
Handling

Format:	Liquid
Concentration:	0.5 mg/mL
Buffer:	Supplied at 0.5 mg/mL in Tris saline, 0.02 % sodium azide, pH 7.3 with 0.5 % bovine serum albumin.
Preservative:	Sodium azide
Precaution of Use:	This product contains Sodium azide: a POISONOUS AND HAZARDOUS SUBSTANCE which should be handled by trained staff only.
Handling Advice:	Minimize freezing and thawing.
Storage:	-20 °C
Storage Comment:	Aliquot and store at -20°C, with minimal freeze/thawing. A working aliquot may be refrigerated at 4°C for a few weeks and still remain viable.



Immunohistochemistry

Image 1. ABIN184750 (5µg/ml) staining of paraffin embedded Human Thymus. Steamed antigen retrieval with citrate buffer pH 6, AP-staining.



Western Blotting

Image 2. ABIN184750 staining (2µg/ml) of Human Liver lysate (RIPA buffer, 35µg total protein per lane). Primary incubated for 1 hour. Detected by chemiluminescence.