

Datasheet for ABIN184756

anti-Flotillin 1 antibody (C-Term)

6 Images

1 Publication

[Go to Product page](#)

Overview

Quantity:	100 µg
Target:	Flotillin 1 (FLOT1)
Binding Specificity:	C-Term
Reactivity:	Human
Host:	Goat
Clonality:	Polyclonal
Conjugate:	This Flotillin 1 antibody is un-conjugated
Application:	Western Blotting (WB), ELISA, Immunohistochemistry (IHC)

Product Details

Purpose:	Flotillin 1
Immunogen:	C-SISQVNHKPLRTA
Sequence:	SISQVNHKPL RTA
Isotype:	IgG
Specificity:	This antibody is expected to recognize both reported isoforms (NP_005794.1, NP_001305804.1).
Cross-Reactivity:	Cow, Dog, Human, Pig
Purification:	Purified from goat serum by ammonium sulphate precipitation followed by antigen affinity chromatography using the immunizing peptide.
Grade:	Verified

Target Details

Target:	Flotillin 1 (FLOT1)
Alternative Name:	FLOT1 (FLOT1 Products)
Background:	FLOT1, flotillin 1, reggie-2, integral membrane component of caveolae, DADB-118P11.2
Gene ID:	10211, 14251
NCBI Accession:	NP_005794 , NP_001305804

Application Details

Application Notes:	<p>Immunohistochemistry: Paraffin embedded Human Kidney. Recommended concentration: 5 µg/mL.</p> <p>Western Blot: Approx 48 kDa band observed in lysates of cell line K562 and in preliminary testing of cell lysate MCF7 (calculated MW of 47.4 kDa according to NP_005794.1).</p> <p>Recommended concentration: 0.1-0.3 µg/mL. Primary incubation 1 hour at room temperature.</p> <p>Peptide ELISA: antibody detection limit dilution 1:32000.</p>
Restrictions:	For Research Use only

Handling

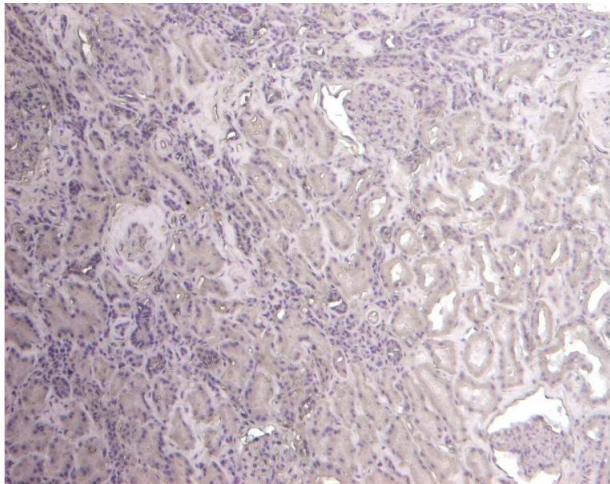
Format:	Liquid
Concentration:	0.5 mg/mL
Buffer:	Supplied at 0.5 mg/mL in Tris saline, 0.02 % sodium azide, pH 7.3 with 0.5 % bovine serum albumin.
Preservative:	Sodium azide
Precaution of Use:	This product contains Sodium azide: a POISONOUS AND HAZARDOUS SUBSTANCE which should be handled by trained staff only.
Handling Advice:	Minimize freezing and thawing.
Storage:	-20 °C
Storage Comment:	Aliquot and store at -20°C, with minimal freeze/thawing. A working aliquot may be refrigerated at 4°C for a few weeks and still remain viable.

Publications

Product cited in:	Vassilieva, Gerner-Smidt, Ivanov, Nusrat: "Lipid rafts mediate internalization of beta1-integrin in
-------------------	---

migrating intestinal epithelial cells." in: **American journal of physiology. Gastrointestinal and liver physiology**, Vol. 295, Issue 5, pp. G965-76, (2008) ([PubMed](#)).

Images



Immunohistochemistry

Image 1. (ABIN184756) Negative Control showing staining of paraffin embedded Human Kidney, with no primary antibody.

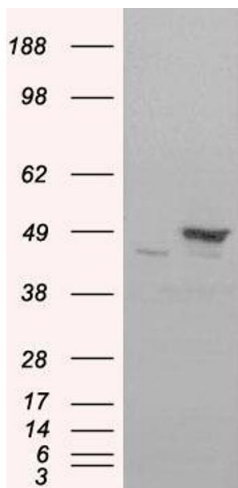
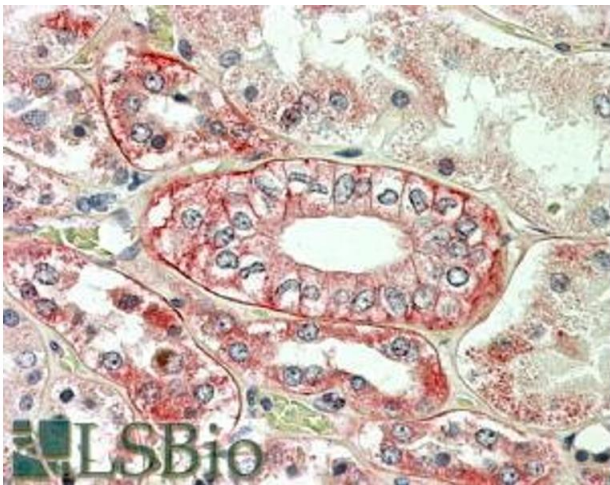


Image 2. HEK293 overexpressing FLOT1(RC200231) and probed with ABIN184756 (mock transfection in first lane), tested by Origene.



Immunohistochemistry

Image 3. ABIN184756 (3.8µg/ml) staining of paraffin embedded Human Kidney. Steamed antigen retrieval with citrate buffer pH 6, AP-staining. This data is from a previous batch, not on sale.

Please check the [product details page](#) for more images. Overall 6 images are available for ABIN184756.