

Datasheet for ABIN184759

anti-SORBS1 antibody (C-Term)



[Go to Product page](#)

1 Image

Overview

Quantity:	100 µg
Target:	SORBS1
Binding Specificity:	C-Term
Reactivity:	Human
Host:	Goat
Clonality:	Polyclonal
Conjugate:	This SORBS1 antibody is un-conjugated
Application:	ELISA, Immunohistochemistry (IHC)

Product Details

Purpose:	SORBS1 / Ponsin (C Terminus)
Immunogen:	Peptide with sequence C-GTFPGNYVKPLYL, from the C Terminus of the protein sequence according to NP_006425.2, NP_056200.1, NP_001030126.1, NP_001030127.1, NP_001030128.1, NP_079267.1, NP_001030129.1.
Sequence:	GTFPGNYVKP LYL
Isotype:	IgG
Specificity:	This antibody is expected to recognize all seven reported isoforms (NP_006425.2, NP_056200.1, NP_001030126.1, NP_001030127.1, NP_001030128.1, NP_079267.1 and NP_001030129.1).
Cross-Reactivity:	Human, Mouse, Pig, Rat

Product Details

Purification: Purified from goat serum by ammonium sulphate precipitation followed by antigen affinity chromatography using the immunizing peptide.

Grade: Verified

Target Details

Target: SORBS1

Alternative Name: SORBS1 ([SORBS1 Products](#))

Background: SORBS1, PONSIN, sorbin and SH3 domain containing 1, CAP, SH3D5, SORB1, SH3P12, ponsin, sh3p12, FLJ12406, KIAA1296, DKFZP586P1422, DKFZp451C066, SH3-domain protein 5 (ponsin), FLAF2, FLJ12406, R85FL, Fas-ligand associated factor 2, c-Cbl associated protei

Gene ID: 10580, 20411

NCBI Accession: [NP_006425](#), [NP_056200](#), [NP_001030126](#), [NP_001030127](#), [NP_001030128](#), [NP_079267](#), [NP_001030129](#)

Pathways: [Cell-Cell Junction Organization](#), [Regulation of Carbohydrate Metabolic Process](#)

Application Details

Application Notes: Immunohistochemistry: Paraffin embedded Human Skeletal Muscle. Recommended concentration: 2.5 µg/mL.
Western Blot: No signal obtained yet but low background observed in Human Heart and 293 lysates at up to 2 µg/mL.
Peptide ELISA: antibody detection limit dilution 1:16000.

Restrictions: For Research Use only

Handling

Format: Liquid

Concentration: 0.5 mg/mL

Buffer: Supplied at 0.5 mg/mL in Tris saline, 0.02 % sodium azide, pH 7.3 with 0.5 % bovine serum albumin.

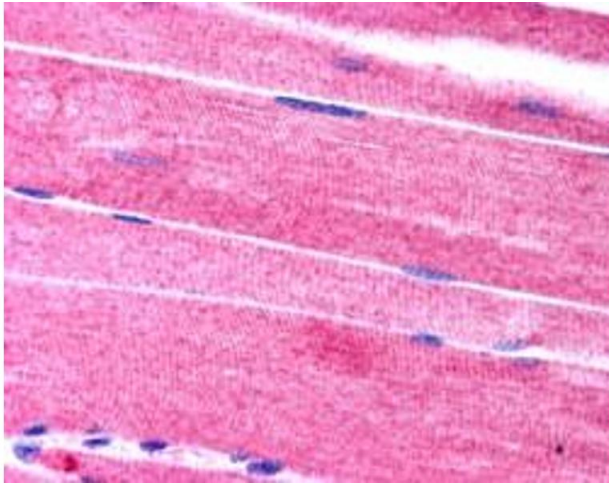
Preservative: Sodium azide

Precaution of Use: This product contains Sodium azide: a POISONOUS AND HAZARDOUS SUBSTANCE which should be handled by trained staff only.

Handling

Handling Advice:	Minimize freezing and thawing.
Storage:	-20 °C
Storage Comment:	Aliquot and store at -20°C, with minimal freeze/thawing. A working aliquot may be refrigerated at 4°C for a few weeks and still remain viable.

Images



Immunohistochemistry

Image 1. ABIN184759 (2.5µg/ml) staining of paraffin embedded Human Skeletal Muscle. Steamed antigen retrieval with citrate buffer Ph 6, AP-staining.