



[Go to Product page](#)

Datasheet for ABIN184763
anti-KLF8 antibody (N-Term)

2 Images

Overview

Quantity:	100 µg
Target:	KLF8
Binding Specificity:	N-Term
Reactivity:	Human
Host:	Goat
Clonality:	Polyclonal
Conjugate:	This KLF8 antibody is un-conjugated
Application:	Western Blotting (WB), ELISA, Immunohistochemistry (IHC)

Product Details

Purpose:	KLF8 / BKLF3
Immunogen:	Peptide with sequence VDMDKLINNLEVQ-C, from the N Terminus of the protein sequence according to NP_009181.2, NP_001152768.1.
Sequence:	VDMDKLINNL EVQ
Isotype:	IgG
Specificity:	This antibody is expected to recognise isoform 1 (NP_009181.2) and isoform 2 (NP_001152768.1).
Cross-Reactivity:	Human, Pig
Purification:	Purified from goat serum by ammonium sulphate precipitation followed by antigen affinity chromatography using the immunizing peptide.

Product Details

Grade: Verified

Target Details

Target: KLF8

Alternative Name: KLF8 ([KLF8 Products](#))

Background: KLF8, BKLF3, Kruppel-like factor 8, RP13-1021K9.1, DKFZp686O08126, DXS741, MGC138314, ZNF741, zinc finger protein 741, basic kruppel-like factor 3

Gene ID: 11279

NCBI Accession: [NP_009181](#), [NP_001152768](#)

Application Details

Application Notes: Immunohistochemistry: Paraffin embedded Human Small Intestine. Recommended concentration: 3.75 µg/mL.
Western Blot: Approx 50 kDa band observed in Human Kidney lysates (calculated MW of 39.3 according to NP_009181.2) . In glioblastomas this protein was reported to run at appr. 60 kDa (Ding et al . J Biol Chem. 2005 Feb 25;280(8):6802-15, PMID: 15557280). Re
Peptide ELISA: antibody detection limit dilution 1:32000.

Restrictions: For Research Use only

Handling

Format: Liquid

Concentration: 0.5 mg/mL

Buffer: Supplied at 0.5 mg/mL in Tris saline, 0.02 % sodium azide, pH 7.3 with 0.5 % bovine serum albumin.

Preservative: Sodium azide

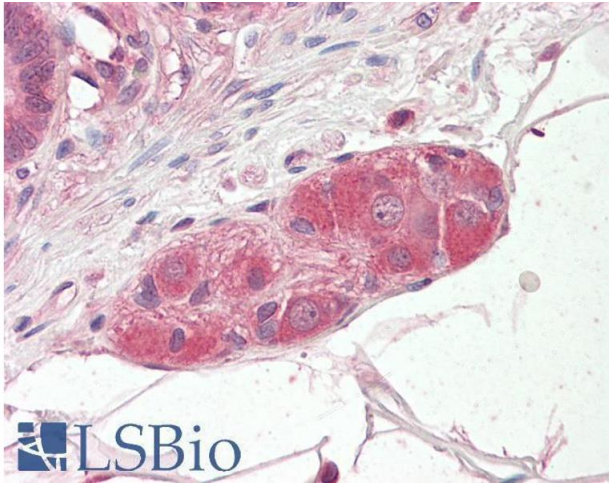
Precaution of Use: This product contains Sodium azide: a POISONOUS AND HAZARDOUS SUBSTANCE which should be handled by trained staff only.

Handling Advice: Minimize freezing and thawing.

Storage: -20 °C

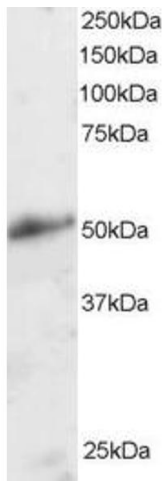
Storage Comment: Aliquot and store at -20°C, with minimal freeze/thawing. A working aliquot may be refrigerated

at 4°C for a few weeks and still remain viable.



Immunohistochemistry

Image 1. ABIN184763 (3.75µg/ml) staining of paraffin embedded Human Small Intestine. Steamed antigen retrieval with citrate buffer pH 6, AP-staining.



Western Blotting

Image 2. ABIN184763 staining (2µg/ml) of Human Kidney lysate (RIPA buffer, 30µg total protein per lane). Primary incubated for 1 hour. Detected by chemiluminescence.