

Datasheet for ABIN184768  
**anti-KIF4A antibody (C-Term)**[Go to Product page](#)

## 3 Images

## Overview

Quantity:	100 µg
Target:	KIF4A
Binding Specificity:	C-Term
Reactivity:	Human, Mouse
Host:	Goat
Clonality:	Polyclonal
Conjugate:	This KIF4A antibody is un-conjugated
Application:	Western Blotting (WB), ELISA, Immunofluorescence (IF), Flow Cytometry (FACS)

## Product Details

Purpose:	KIF4A
Immunogen:	Peptide with sequence SFFSGCSPIEEEAH, from the C Terminus of the protein sequence according to NP_036442.3.
Sequence:	SFFSGCSPIE EEAH
Isotype:	IgG
Cross-Reactivity:	Cow, Human, Mouse, Pig, Rat
Purification:	Purified from goat serum by ammonium sulphate precipitation followed by antigen affinity chromatography using the immunizing peptide.
Grade:	Verified

## Target Details

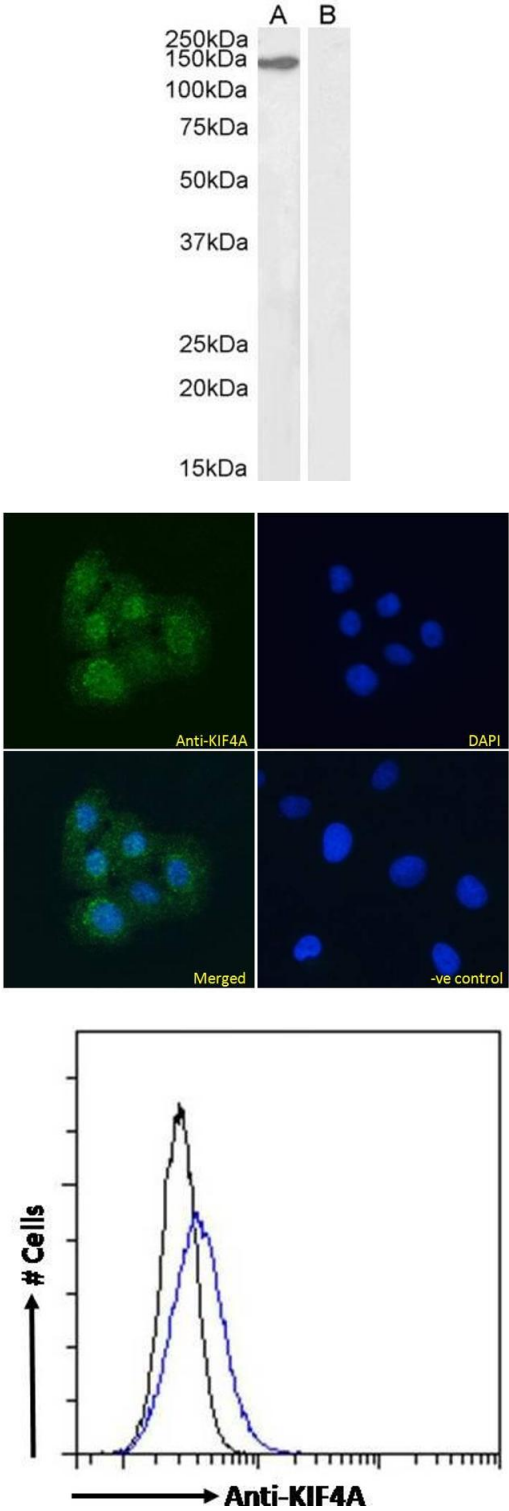
Target:	KIF4A
Alternative Name:	KIF4A ( <a href="#">KIF4A Products</a> )
Background:	KIF4A, kinesin family member 4A, FLJ12530, FLJ12655, FLJ14204, FLJ20631, HSA271784, KIF4, KIF4-G1, chromokinesin, kinesin family member 4
NCBI Accession:	<a href="#">NP_036442</a>

## Application Details

Application Notes:	Western Blot: Approx 150 kDa band observed in nuclear lysates of cell line NIH3T3 (calculated MW of 139.5 kDa according to Mouse NP_032472.2). Recommended concentration:1-2 µg/mL. Primary incubation 1 hour at room temperature. <b>Negative Control:</b> <b>Peptide ELISA: antibody detection limit dilution 1:64000.</b>
Comment:	<b>Immunofluorescence:</b> Strong expression of the protein seen in the nuclei of U2OS cells. Recommended concentration: 10µg/ml. <b>Flow Cytometry:</b> Flow cytometric analysis of HEK293 cells. Recommended concentration: 10ug/ml.
Restrictions:	For Research Use only

## Handling

Format:	Liquid
Concentration:	0.5 mg/mL
Buffer:	Supplied at 0.5 mg/mL in Tris saline, 0.02 % sodium azide, pH 7.3 with 0.5 % bovine serum albumin.
Preservative:	Sodium azide
Precaution of Use:	This product contains Sodium azide: a POISONOUS AND HAZARDOUS SUBSTANCE which should be handled by trained staff only.
Handling Advice:	Minimize freezing and thawing.
Storage:	-20 °C
Storage Comment:	Aliquot and store at -20°C, with minimal freeze/thawing. A working aliquot may be refrigerated at 4°C for a few weeks and still remain viable.



Western Blotting

**Image 1.** ABIN184768 (2µg/ml) staining of nuclear NIH3T3 (A) and (2ug/ml) negative control Human Ovary (B) lysate. (35µg protein in RIPA buffer) Detected by chemiluminescence.

Immunofluorescence

**Image 2.** ABIN184768 Immunofluorescence analysis of paraformaldehyde fixed U2OS cells, permeabilized with 0.15% Triton. Primary incubation 1hr (10ug/ml) followed by Alexa Fluor 488 secondary antibody (4ug/ml), showing nuclear staining. The nuclear stain is DAPI (blue). Negative control: Unimmunized goat IgG (10ug/ml) followed by Alexa Fluor 488 secondary antibody (2ug/ml).

Flow Cytometry

**Image 3.** ABIN184768 Flow cytometric analysis of paraformaldehyde fixed HEK293 cells (blue line), permeabilized with 0.5% Triton. Primary incubation 1hr (10ug/ml) followed by Alexa Fluor 488 secondary antibody (4ug/ml). IgG control: Unimmunized goat IgG (black line) f