



[Go to Product page](#)

Datasheet for ABIN184770
anti-BAG3 antibody (C-Term)

5 Images

Overview

Quantity:	100 µg
Target:	BAG3
Binding Specificity:	C-Term
Reactivity:	Human
Host:	Goat
Clonality:	Polyclonal
Conjugate:	This BAG3 antibody is un-conjugated
Application:	Western Blotting (WB), ELISA, Immunohistochemistry (IHC)

Product Details

Purpose:	BAG3 / BIS/ CAIR1
Immunogen:	Peptide with sequence C-SSMTDTPGNPAAP, from the C Terminus of the protein sequence according to NP_004272.2.
Sequence:	SSMTDTPGNP AAP
Isotype:	IgG
Cross-Reactivity:	Human
Purification:	Purified from goat serum by ammonium sulphate precipitation followed by antigen affinity chromatography using the immunizing peptide.
Grade:	Verified

Target Details

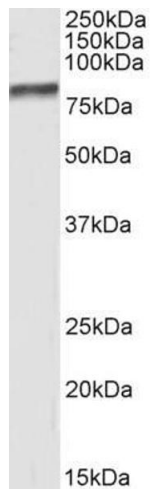
Target:	BAG3
Alternative Name:	BAG3 (BAG3 Products)
Background:	BAG3, BCL2-associated athanogene 3, BIS, BAG-3, CAIR-1, MGC104307, DKFZp434E0610, Bcl-2-binding protein, docking protein CAIR-1, BCL2-binding athanogene 3, BAG-family molecular chaperone regulator-3
Gene ID:	9531
NCBI Accession:	NP_004272

Application Details

Application Notes:	Immunohistochemistry: Paraffin embedded Human Kidney. Recommended concentration: 7 µg/mL. Western Blot: Approx 80-85 kDa band observed in lysates of cell line MCF7 (calculated MW of 61.6 kDa according to NP_004272.2). This molecular weight is routinely observed by other sources. Recommended concentration: 0.3-1 µg/mL. Primary incubation was 1 ho Peptide ELISA: antibody detection limit dilution 1:2000.
Restrictions:	For Research Use only

Handling

Format:	Liquid
Concentration:	0.5 mg/mL
Buffer:	Supplied at 0.5 mg/mL in Tris saline, 0.02 % sodium azide, pH 7.3 with 0.5 % bovine serum albumin.
Preservative:	Sodium azide
Precaution of Use:	This product contains Sodium azide: a POISONOUS AND HAZARDOUS SUBSTANCE which should be handled by trained staff only.
Handling Advice:	Minimize freezing and thawing.
Storage:	-20 °C
Storage Comment:	Aliquot and store at -20°C, with minimal freeze/thawing. A working aliquot may be refrigerated at 4°C for a few weeks and still remain viable.



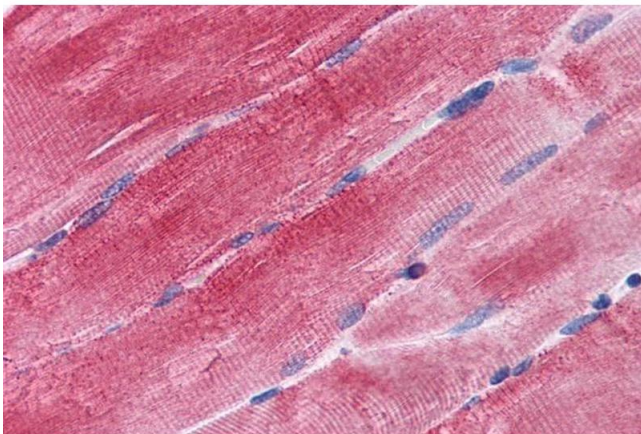
Western Blotting

Image 1. ABIN184770 (0.5 μ g/ml) staining of MCF7 cell lysate (35 μ g protein in RIPA buffer). Primary incubation was 1 hour. Detected by chemiluminescence.



Western Blotting

Image 2. Antibody (0.1 μ g/ml) staining of Human Skeletal Muscle lysate (35 μ g protein in RIPA buffer). Primary incubation was 1 hour. Detected by chemiluminescence.



Immunohistochemistry

Image 3. ABIN184770 (3.75 μ g/ml) staining of paraffin embedded Human Skeletal Muscle. Steamed antigen retrieval with citrate buffer pH 6, AP-staining.

Please check the [product details page](#) for more images. Overall 5 images are available for ABIN184770.