

Datasheet for ABIN184772
anti-CPT1B antibody (C-Term)[Go to Product page](#)

1 Image

Overview

Quantity:	100 µg
Target:	CPT1B
Binding Specificity:	C-Term
Reactivity:	Human
Host:	Goat
Clonality:	Polyclonal
Conjugate:	This CPT1B antibody is un-conjugated
Application:	ELISA, Immunohistochemistry (IHC)

Product Details

Purpose:	CPT1B (isoform 1)
Immunogen:	Peptide with sequence C-DIADLFQVPKAYS, from the C Terminus of the protein sequence according to NP_689452.1, NP_689451.1, NP_004368.1, NP_001138609.1, NP_001138607.1, NP_001138606.1, NP_001138608.1.
Sequence:	DIADLFQVPKAYS
Isotype:	IgG
Specificity:	This antibody is expected to recognise human isoforms a (NP_689452.1, NP_689451.1, NP_004368.1, NP_001138609.1, NP_001138607.1), isoform c (NP_001138606.1) and isoform d (NP_001138608.1).
Cross-Reactivity:	Human

Product Details

Purification: Purified from goat serum by ammonium sulphate precipitation followed by antigen affinity chromatography using the immunizing peptide.

Grade: Verified

Target Details

Target: CPT1B

Alternative Name: CPT1B ([CPT1B Products](#))

Background: CPT1B, carnitine palmitoyltransferase I, muscle, carnitine palmitoyltransferase 1B (muscle) , CPT1-M, M-CPT1, KIAA1670, CPTI, muscle, carnitine O-palmitoyltransferase I, mitochondrial muscle isoform, carnitine palmitoyltransferase 1A (muscle), carnitine p

Gene ID: 1375

NCBI Accession: [NP_689452](#), [NP_689451](#), [NP_004368](#), [NP_001138609](#), [NP_001138607](#), [NP_001138606](#), [NP_001138608](#)

Pathways: [AMPK Signaling](#), [Monocarboxylic Acid Catabolic Process](#)

Application Details

Application Notes: Immunohistochemistry: In paraffin embedded Human Heart shows staining of myocardial fibres in longitudinal section. Recommended concentration, 3-5 µg/mL.

Western Blot: Preliminary experiments gave no signal but low background in human kidney and HepG2 lysates at up to 1 µg/mL. We would appreciate any feedback from people in the field - have any results been reported with other antibodies/lysates?

Peptide ELISA: antibody detection limit dilution 1:16000.

Restrictions: For Research Use only

Handling

Format: Liquid

Concentration: 0.5 mg/mL

Buffer: Supplied at 0.5 mg/mL in Tris saline, 0.02 % sodium azide, pH 7.3 with 0.5 % bovine serum albumin.

Preservative: Sodium azide

Precaution of Use: This product contains Sodium azide: a POISONOUS AND HAZARDOUS SUBSTANCE which

Handling

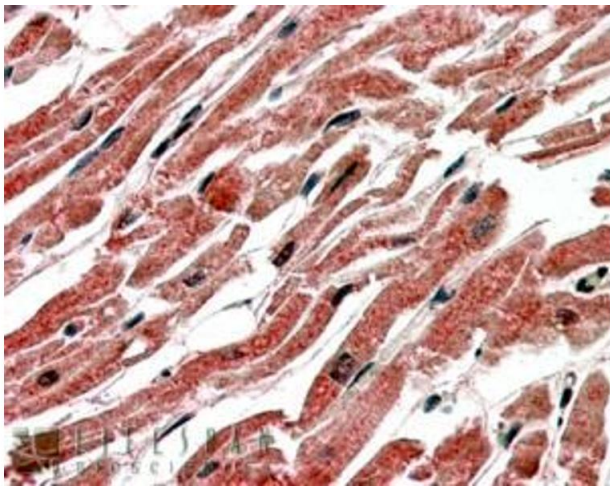
should be handled by trained staff only.

Handling Advice: Minimize freezing and thawing.

Storage: -20 °C

Storage Comment: Aliquot and store at -20°C, with minimal freeze/thawing. A working aliquot may be refrigerated at 4°C for a few weeks and still remain viable.

Images



Immunohistochemistry

Image 1. ABIN184772 (3.8µg/ml) staining of paraffin embedded Human Heart. Steamed antigen retrieval with citrate buffer pH 6, AP-staining.