

Datasheet for ABIN184777
anti-ELF3 antibody (C-Term)

2 Images

[Go to Product page](#)

Overview

Quantity:	100 µg
Target:	ELF3
Binding Specificity:	C-Term
Reactivity:	Human
Host:	Goat
Clonality:	Polyclonal
Conjugate:	This ELF3 antibody is un-conjugated
Application:	Western Blotting (WB), ELISA

Product Details

Purpose:	ELF3 / ERT/ ESX
Immunogen:	Peptide with sequence C-SGWKEEEVLQSRN, from the C Terminus of the protein sequence according to NP_004424.2.
Sequence:	SGWKEEEVLQ SRN
Isotype:	IgG
Cross-Reactivity:	Human
Purification:	Purified from goat serum by ammonium sulphate precipitation followed by antigen affinity chromatography using the immunizing peptide.
Grade:	Verified

Target Details

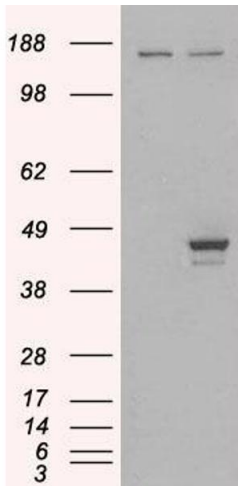
Target:	ELF3
Alternative Name:	ELF3 (ELF3 Products)
Background:	ELF3, ERT, E74-like factor 3 (ets domain transcription factor, epithelial-specific), EPR-1, ESE-1, E74-like factor 3 (ets domain transcription factor), ets domain transcription factor, serine box (epithelial-specific), E74-like factor 3 (ETS domain trans
Gene ID:	1999
NCBI Accession:	NP_004424

Application Details

Application Notes:	Western Blot: Approx 48 kDa band observed in NCI-H460 lysate (calculated MW of 41.5 kDa according to NP_004424.2). In transfected HEK293 transiently expressing ELF3 a band of approx. 40 kDa is observed. This band is not observed in the non-transfected HEK2 Peptide ELISA: antibody detection limit dilution 1:32000.
Restrictions:	For Research Use only

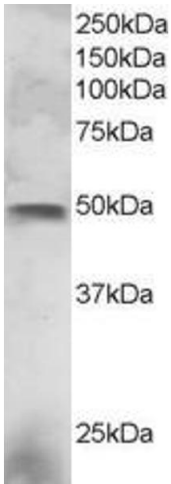
Handling

Format:	Liquid
Concentration:	0.5 mg/mL
Buffer:	Supplied at 0.5 mg/mL in Tris saline, 0.02 % sodium azide, pH 7.3 with 0.5 % bovine serum albumin.
Preservative:	Sodium azide
Precaution of Use:	This product contains Sodium azide: a POISONOUS AND HAZARDOUS SUBSTANCE which should be handled by trained staff only.
Handling Advice:	Minimize freezing and thawing.
Storage:	-20 °C
Storage Comment:	Aliquot and store at -20°C, with minimal freeze/thawing. A working aliquot may be refrigerated at 4°C for a few weeks and still remain viable.



Western Blotting

Image 1. HEK293 overexpressing ELF3 (ABIN5400892) and probed with ABIN184777 (mock transfection in first lane).



Western Blotting

Image 2. ABIN184777 staining (3µg/ml) of NCI-H460 lysate (RIPA buffer, 30µg total protein per lane). Primary incubated for 1 hour. Detected by western blot using chemiluminescence.