

Datasheet for ABIN184783
anti-PAX8 antibody (N-Term)[Go to Product page](#)

4 Images

Overview

Quantity:	100 µg
Target:	PAX8
Binding Specificity:	N-Term
Reactivity:	Human
Host:	Goat
Clonality:	Polyclonal
Conjugate:	This PAX8 antibody is un-conjugated
Application:	Western Blotting (WB), ELISA, Immunohistochemistry (IHC)

Product Details

Purpose:	PAX8 (N Terminus)
Immunogen:	Peptide with sequence PHNSIRSGHGGLN-C, from the N Terminus of the protein sequence according to NP_003457.1, NP_039245.1, NP_039246.1, NP_039247.1, NP_054698.1.
Sequence:	PHNSIRSGHG GLN
Isotype:	IgG
Specificity:	This antibody is expected to recognise all five human isoforms (as represented by NP_003457.1, NP_039245.1, NP_039246.1, NP_039247.1, NP_054698.1)
Cross-Reactivity:	Human, Mouse, Rat
Purification:	Purified from goat serum by ammonium sulphate precipitation followed by antigen affinity chromatography using the immunizing peptide.

Product Details

Grade: Verified

Target Details

Target: PAX8

Alternative Name: PAX8 ([PAX8 Products](#))

Background: PAX8, paired box gene 8, paired domain gene 8, paired box 8

Gene ID: 7849, 18510, 81819

NCBI Accession: [NP_003457](#), [NP_039245](#), [NP_039246](#), [NP_039247](#), [NP_054698](#)

Pathways: [Thyroid Hormone Synthesis](#), [Regulation of Hormone Metabolic Process](#), [Stem Cell Maintenance](#), [Tube Formation](#)

Application Details

Application Notes: Immunohistochemistry: Paraffin embedded Human Kidney Cortex. Recommended concentration: 5 µg/mL.

Western Blot: Approx 35 kDa band observed in Human Kidney lysates. An additional 48 kDa was also observed in some Kidney and HeLa cell lysates (calculated MW of 34.9 kDa according to Human NP_039247.1 PAX8D and 48.2 kDa according to Human NP_003457.1 PAXA).

Peptide ELISA: antibody detection limit dilution 1:128000.

Restrictions: For Research Use only

Handling

Format: Liquid

Concentration: 0.5 mg/mL

Buffer: Supplied at 0.5 mg/mL in Tris saline, 0.02 % sodium azide, pH 7.3 with 0.5 % bovine serum albumin.

Preservative: Sodium azide

Precaution of Use: This product contains Sodium azide: a POISONOUS AND HAZARDOUS SUBSTANCE which should be handled by trained staff only.

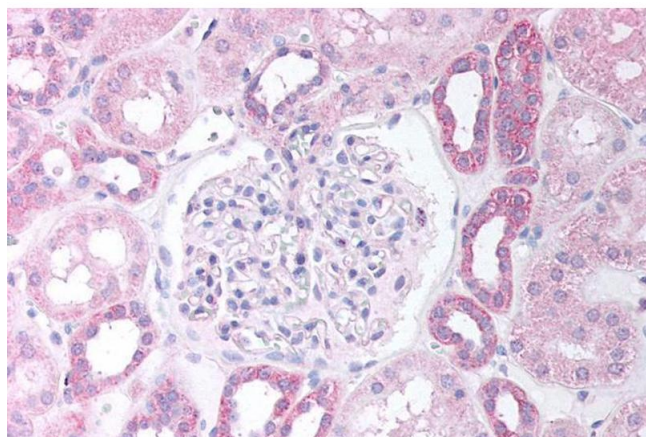
Handling Advice: Minimize freezing and thawing.

Storage: -20 °C

Handling

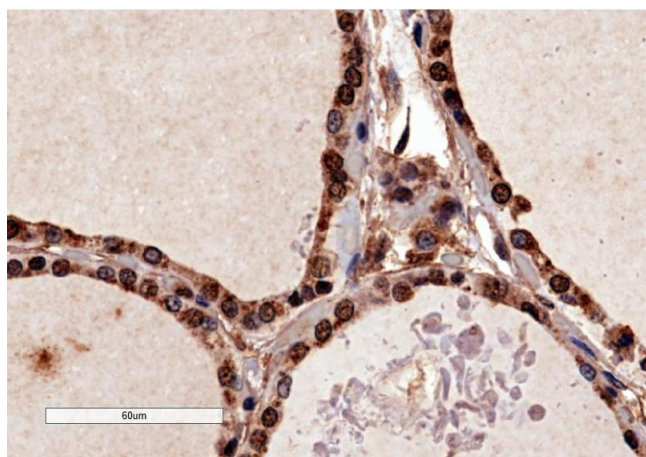
Storage Comment: Aliquot and store at -20°C, with minimal freeze/thawing. A working aliquot may be refrigerated at 4°C for a few weeks and still remain viable.

Images



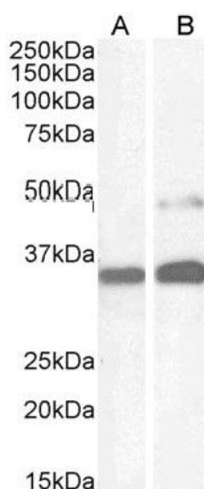
Immunohistochemistry

Image 1. ABIN184783 (5µg/ml) staining of paraffin embedded Human Kidney Cortex. Steamed antigen retrieval with citrate buffer pH 6, AP-staining.



Immunohistochemistry

Image 2. ABIN184783 (4µg/ml) staining of paraffin embedded Human Thyroid Gland. Microwaved antigen retrieval with citrate buffer pH 6, HRP-staining. **This data is from a previous batch, not on sale.**



Western Blotting

Image 3. ABIN184783 (1µg/ml) staining of Human Kidney (A) and HeLa cell (B) lysate (35µg protein in RIPA buffer). Detected by chemiluminescence.

Please check the [product details page](#) for more images. Overall 4 images are available for ABIN184783.