

Datasheet for ABIN184784
anti-CBR1 antibody (C-Term)

8 Images

[Go to Product page](#)

Overview

Quantity:	100 µg
Target:	CBR1
Binding Specificity:	C-Term
Reactivity:	Human
Host:	Goat
Clonality:	Polyclonal
Conjugate:	This CBR1 antibody is un-conjugated
Application:	Western Blotting (WB), ELISA, Immunohistochemistry (IHC), Immunofluorescence (IF)

Product Details

Purpose:	CBR1
Immunogen:	Peptide with sequence C-HGQFVSEKRVEQW, from the C Terminus of the protein sequence according to NP_001748.1.
Sequence:	HGQFVSEKRV EQW
Isotype:	IgG
Cross-Reactivity:	Human
Purification:	Purified from goat serum by ammonium sulphate precipitation followed by antigen affinity chromatography using the immunizing peptide.
Grade:	Verified

Target Details

Target:	CBR1
Alternative Name:	CBR1 (CBR1 Products)
Background:	CBR1, carbonyl reductase 1, CBR, carbonyl reductase (NADPH), carbonyl reductase (NADPH) 1, hCBR1, prostaglandin 9-ketoreductase, prostaglandin-E(2) 9-reductase, SDR21C1, short chain dehydrogenase/reductase family 21C, member 1
Gene ID:	873
NCBI Accession:	NP_001748

Application Details

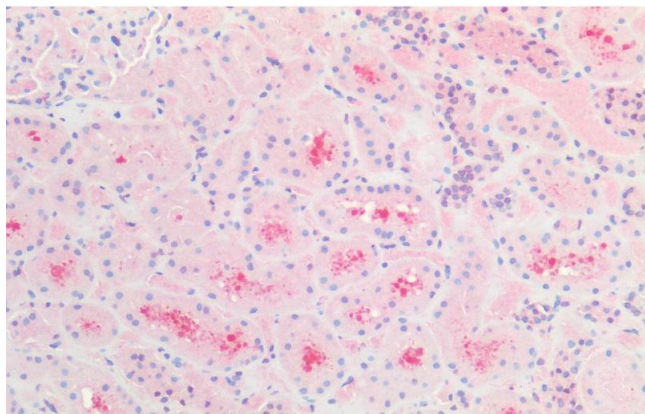
Application Notes:	<p>Immunohistochemistry: Paraffin embedded Human Kidney. Recommended concentration: 5 µg/mL.</p> <p>Western Blot: Approx 30-35 kDa band observed in Human Liver lysates (calculated MW of 30.4 kDa according to NP_001748.1). Recommended concentration: 0.03-0.1 µg/mL. Primary incubation 1 hour at room temperature.</p> <p>Peptide ELISA: antibody detection limit dilution 1:4000.</p>
Comment:	<p>Immunofluorescence: Strong expression of the protein seen in the cytoplasm of U251 cells.</p> <p>Recommended concentration: 10µg/ml.</p>
Restrictions:	For Research Use only

Handling

Format:	Liquid
Concentration:	0.5 mg/mL
Buffer:	Supplied at 0.5 mg/mL in Tris saline, 0.02 % sodium azide, pH 7.3 with 0.5 % bovine serum albumin.
Preservative:	Sodium azide
Precaution of Use:	This product contains Sodium azide: a POISONOUS AND HAZARDOUS SUBSTANCE which should be handled by trained staff only.
Handling Advice:	Minimize freezing and thawing.
Storage:	-20 °C
Storage Comment:	Aliquot and store at -20°C, with minimal freeze/thawing. A working aliquot may be refrigerated

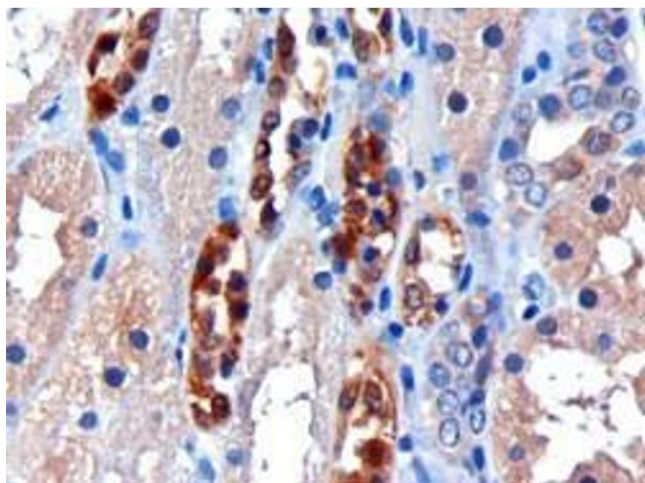
at 4°C for a few weeks and still remain viable.

Images



Immunohistochemistry

Image 1. ABIN184784 (5 µg/mL) staining of paraffin embedded Human Kidney. Steamed antigen retrieval with citrate buffer pH 6, AP-staining.



Immunohistochemistry

Image 2. ABIN184784 (3 µg/mL) staining of paraffin embedded Human Kidney. Microwaved antigen retrieval with citrate buffer pH 6, HRP-staining.

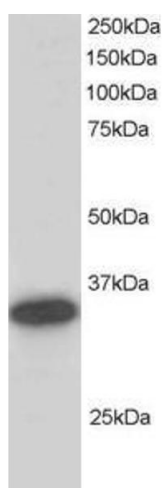


Image 3. ABIN184784 staining (0.2 µg/mL) of Human Liver lysate (RIPA buffer, 30 µg total protein per lane). Primary incubated for 1 hour. Detected by western blot using chemiluminescence.

Please check the [product details page](#) for more images. Overall 8 images are available for ABIN184784.