

Datasheet for ABIN184786
anti-DCXR antibody (C-Term)[Go to Product page](#)

2 Images

Overview

Quantity:	100 µg
Target:	DCXR
Binding Specificity:	C-Term
Reactivity:	Human
Host:	Goat
Clonality:	Polyclonal
Conjugate:	This DCXR antibody is un-conjugated
Application:	Western Blotting (WB), Immunohistochemistry (IHC), ELISA

Product Details

Purpose:	Dicarbonyl Reductase
Immunogen:	GSTLPVEGGFWAC
Sequence:	GSTLPVEGGF WAC
Isotype:	IgG
Cross-Reactivity:	Human
Purification:	Purified from goat serum by ammonium sulphate precipitation followed by antigen affinity chromatography using the immunizing peptide.
Grade:	Verified

Target Details

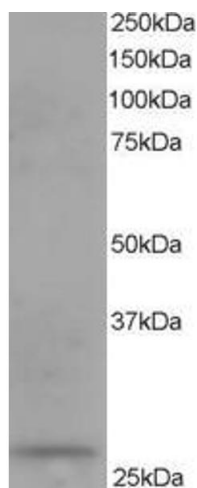
Target:	DCXR
Alternative Name:	DCXR (DCXR Products)
Background:	DCXR, dicarbonyl/L-xylulose reductase, DCR, HCR11, KIDCR, P34H, carbonyl reductase, carbonyl reductase II, kidney dicarbonyl reductase, HCR2, SDR20C1, human carbonyl reductase 2, kidney dicarbonyl reductase, short chain dehydrogenase/reductase family 20C
Gene ID:	51181
NCBI Accession:	NP_057370
Pathways:	Glycosaminoglycan Metabolic Process , Monocarboxylic Acid Catabolic Process

Application Details

Application Notes:	Immunohistochemistry: In paraffin embedded human kidney, stains membrane / cytoplasm in epithelial cells of renal glomeruli and tubules. Recommended concentration, 1-2 µg/mL. Western Blot: Approx 26 kDa band observed in human kidney, liver and testes lysates (calculated MW of 25.9 kDa according to NP_057370.1). Recommended for use at 0.1-0.3 µg/mL. Peptide ELISA: antibody detection limit dilution 1:32000.
Restrictions:	For Research Use only

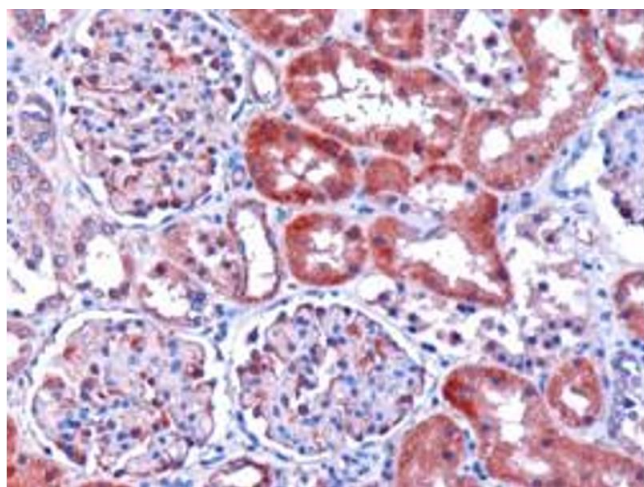
Handling

Format:	Liquid
Concentration:	0.5 mg/mL
Buffer:	Supplied at 0.5 mg/mL in Tris saline, 0.02 % sodium azide, pH 7.3 with 0.5 % bovine serum albumin.
Preservative:	Sodium azide
Precaution of Use:	This product contains Sodium azide: a POISONOUS AND HAZARDOUS SUBSTANCE which should be handled by trained staff only.
Handling Advice:	Minimize freezing and thawing.
Storage:	-20 °C
Storage Comment:	Aliquot and store at -20°C, with minimal freeze/thawing. A working aliquot may be refrigerated at 4°C for a few weeks and still remain viable.



Western Blotting

Image 1. ABIN184786 staining (0.1µg/ml) of human kidney lysate (RIPA buffer, 35µg total protein per lane). Primary incubated for 1 hour. Detected by western blot using chemiluminescence.



Immunohistochemistry

Image 2. ABIN184786 (1µg/ml) staining of paraffin embedded human kidney. Microwaved antigen retrieval with citrate buffer pH 6, HRP-staining.