

Datasheet for ABIN1847890

anti-HSP90AB1 antibody (Ser254)[Go to Product page](#)**4** Images

Overview

Quantity:	100 µL
Target:	HSP90AB1
Binding Specificity:	Ser254
Reactivity:	Human, Mouse, Rat
Host:	Rabbit
Clonality:	Polyclonal
Conjugate:	This HSP90AB1 antibody is un-conjugated
Application:	Western Blotting (WB), Immunohistochemistry (IHC), ELISA, Immunoprecipitation (IP), Immunofluorescence (fixed cells) (IF/ICC)

Product Details

Immunogen:	The antiserum was produced against synthesized non-phosphopeptide derived from human HSP90B around the phosphorylation site of serine 254 (V-G-SP-D-E).
Specificity:	Rabbit polyclonal antibody against HSP90B protein.
Purification:	The antibody was affinity-purified from rabbit antiserum by affinity-chromatography using epitope-specific immunogen

Target Details

Target:	HSP90AB1
Alternative Name:	HSP90B (HSP90AB1 Products)
UniProt:	P08238

Target Details

Pathways: [Regulation of Cell Size](#)

Application Details

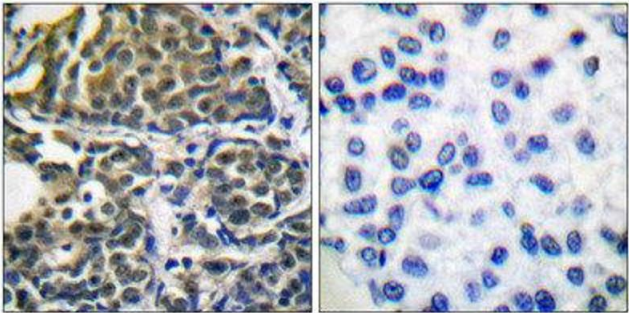
Restrictions: For Research Use only

Handling

Storage: -20 °C

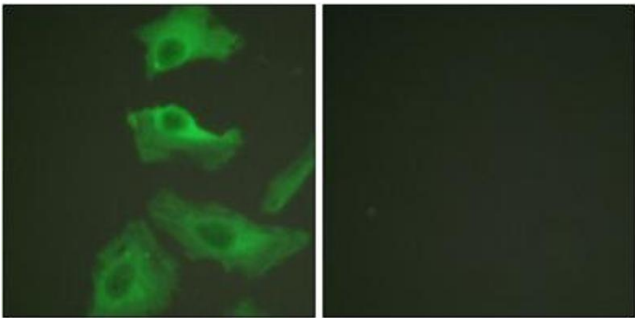
Storage Comment: Aliquot and store at -20 °C. Avoid repeated freeze/thaw cycles.

Images



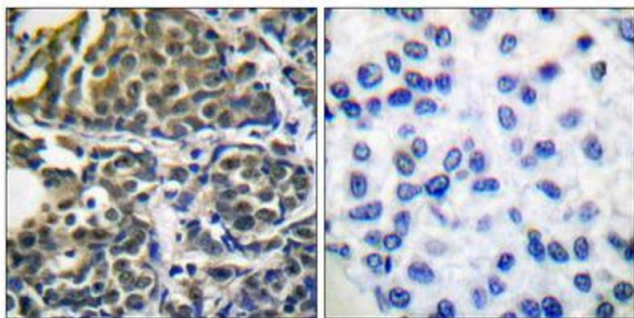
Immunohistochemistry

Image 1.



Immunofluorescence

Image 2. Immunofluorescence analysis of HeLa cells, treated with TNF-a (20nM, 15mins), using HSP90B (epitope around residue 254) antibody (ABIN5976154).



Immunohistochemistry

Image 3. Immunohistochemical analysis of paraffin-embedded human breast carcinoma tissue using HSP90B (epitope around residue 254) antibody (ABIN5976154).

Please check the [product details page](#) for more images. Overall 4 images are available for ABIN1847890.