

Datasheet for ABIN184791

anti-CLDN14 antibody (C-Term)



[Go to Product page](#)

3 Images

Overview

Quantity:	100 µg
Target:	CLDN14
Binding Specificity:	C-Term
Reactivity:	Human
Host:	Goat
Clonality:	Polyclonal
Conjugate:	This CLDN14 antibody is un-conjugated
Application:	Western Blotting (WB), ELISA

Product Details

Purpose:	Claudin 14 / CLDN14
Immunogen:	C-SATHSGYRLNDYV
Sequence:	SATHSGYRLN DYV
Isotype:	IgG
Specificity:	Reported variants represent identical protein (NP_036262.1, NP_652763.1, NP_001139551.1, NP_001139550.1 and NP_001139549.1).
Cross-Reactivity:	Cow, Dog, Human, Mouse, Pig, Rat
Purification:	Purified from goat serum by ammonium sulphate precipitation followed by antigen affinity chromatography using the immunizing peptide.
Grade:	Verified

Target Details

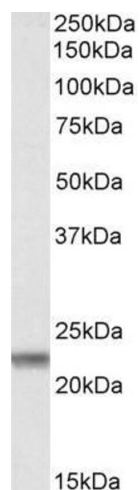
Target:	CLDN14
Alternative Name:	CLDN14 (CLDN14 Products)
Background:	CLDN14, claudin 14, DFNB29, OTTHUMP00000109046, OTTHUMP00000109047, OTTHUMP00000109048, OTTHUMP00000109049
Gene ID:	23562, 56173
NCBI Accession:	NP_036262
Pathways:	Cell-Cell Junction Organization , Hepatitis C

Application Details

Application Notes:	Western Blot: Approx 23 kDa band observed in Human Liver Lysate (calculated MW of 25.7 kDa according to NP_652763.1). Recommended concentration: 0.3-1 µg/mL. Peptide ELISA: antibody detection limit dilution 1:4000.
Restrictions:	For Research Use only

Handling

Format:	Liquid
Concentration:	0.5 mg/mL
Buffer:	Supplied at 0.5 mg/mL in Tris saline, 0.02 % sodium azide, pH 7.3 with 0.5 % bovine serum albumin.
Preservative:	Sodium azide
Precaution of Use:	This product contains Sodium azide: a POISONOUS AND HAZARDOUS SUBSTANCE which should be handled by trained staff only.
Handling Advice:	Minimize freezing and thawing.
Storage:	-20 °C
Storage Comment:	Aliquot and store at -20°C, with minimal freeze/thawing. A working aliquot may be refrigerated at 4°C for a few weeks and still remain viable.



Western Blotting

Image 1. ABIN184791 (0.3 µg/ml) staining of Human Liver lysate (35 µg protein in RIPA buffer). Primary incubation was 1 hour. Detected by chemiluminescence.

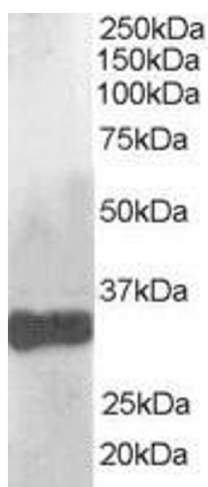
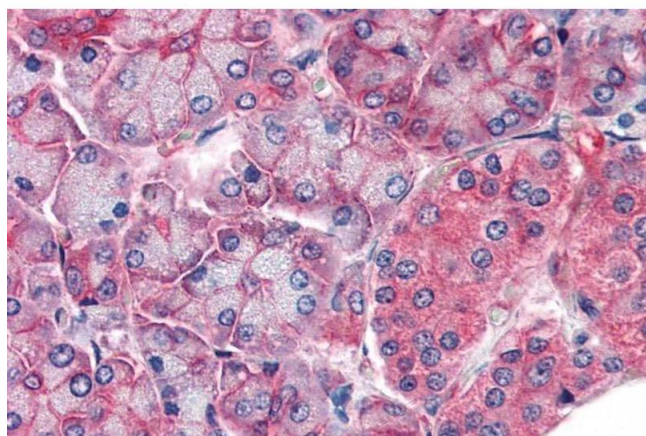


Image 2. ABIN184791 (1 µg/ml) staining of human liver lysate (35 µg protein in RIPA buffer). Primary incubation was 1 hour. Detected by chemiluminescence.



Immunohistochemistry

Image 3. ABIN184791 (5 µg/ml) staining of paraffin embedded Human Pancreas. Steamed antigen retrieval with citrate buffer pH 6, AP-staining. This data was obtained using a previous batch.