



[Go to Product page](#)

Datasheet for ABIN184792
anti-MLH3 antibody (C-Term)

2 Images

Overview

| | |
|----------------------|---|
| Quantity: | 100 µg |
| Target: | MLH3 |
| Binding Specificity: | C-Term |
| Reactivity: | Human |
| Host: | Goat |
| Clonality: | Polyclonal |
| Conjugate: | This MLH3 antibody is un-conjugated |
| Application: | ELISA, Immunofluorescence (IF), Flow Cytometry (FACS) |

Product Details

| | |
|-------------------|---|
| Purpose: | MLH3 |
| Immunogen: | Peptide with sequence RQSLQQSMPPCEPP, from the C Terminus of the protein sequence according to NP_001035197.1, NP_055196.2. |
| Sequence: | RQSLQQSMPP CEPP |
| Isotype: | IgG |
| Specificity: | This antibody is expected to recognize isoform 1 (NP_001035197.1) and isoform 2 (NP_055196.2). |
| Cross-Reactivity: | Human |
| Purification: | Purified from goat serum by ammonium sulphate precipitation followed by antigen affinity chromatography using the immunizing peptide. |

Product Details

Grade: Verified

Target Details

Target: MLH3

Alternative Name: MLH3 ([MLH3 Products](#))

Background: MLH3, mutL homolog 3 (E. coli), HNPCC, HNPCC7, MGC138372, S240I1117, mutL (E. coli) homolog 3, mismatch repair gene MLH3, DNA mismatch repair protein MLH3, mutL homolog 3

Gene ID: 27030

NCBI Accession: [NP_001035197](#), [NP_055196](#)

Pathways: [Chromatin Binding](#)

Application Details

Application Notes: Peptide ELISA: antibody detection limit dilution 1:2000.

Comment: **Immunofluorescence:** Strong expression of the protein seen in the nuclei of HeLa cells. Recommended concentration: 10µg/ml.
Flow Cytometry: Flow cytometric analysis of HeLa cells. Recommended concentration: 10ug/ml.

Restrictions: For Research Use only

Handling

Format: Liquid

Concentration: 0.5 mg/mL

Buffer: Supplied at 0.5 mg/mL in Tris saline, 0.02 % sodium azide, pH 7.3 with 0.5 % bovine serum albumin.

Preservative: Sodium azide

Precaution of Use: This product contains Sodium azide: a POISONOUS AND HAZARDOUS SUBSTANCE which should be handled by trained staff only.

Handling Advice: Minimize freezing and thawing.

Storage: -20 °C

Storage Comment: Aliquot and store at -20°C, with minimal freeze/thawing. A working aliquot may be refrigerated

at 4°C for a few weeks and still remain viable.

Images

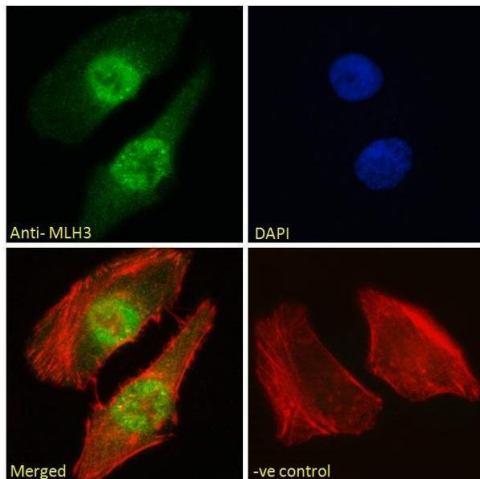
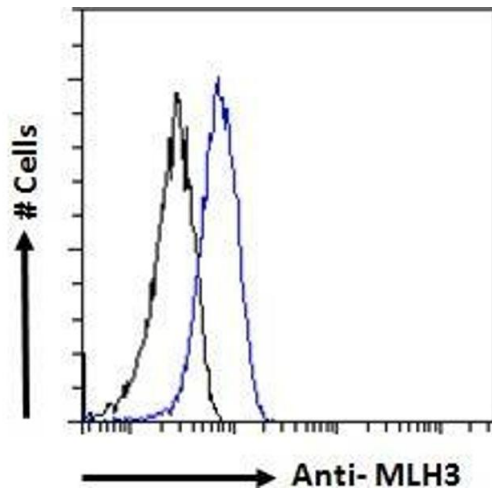
**Flow Cytometry**

Image 1. ABIN184792 Flow cytometric analysis of paraformaldehyde fixed HeLa cells (blue line), permeabilized with 0.5% Triton. Primary incubation 1hr (10ug/ml) followed by Alexa Fluor 488 secondary antibody (1ug/ml). IgG control: Unimmunized goat IgG (black line) followed by Alexa Fluor 488 secondary antibody.

Immunofluorescence

Image 2. ABIN184792 Immunofluorescence analysis of paraformaldehyde fixed HeLa cells, permeabilized with 0.15% Triton. Primary incubation 1hr (10ug/ml) followed by Alexa Fluor 488 secondary antibody (2ug/ml), showing nuclear staining. Actin filaments were stained with phalloidin (red) and the nuclear stain is DAPI (blue). Negative control: Unimmunized goat IgG (10ug/ml) followed by Alexa Fluor 488 secondary antibody (2ug/ml).