

Datasheet for ABIN184795
anti-AKR1A1 antibody (C-Term)

4 Images

[Go to Product page](#)

Overview

Quantity:	100 µg
Target:	AKR1A1
Binding Specificity:	C-Term
Reactivity:	Human
Host:	Goat
Clonality:	Polyclonal
Conjugate:	This AKR1A1 antibody is un-conjugated
Application:	Western Blotting (WB), Immunohistochemistry (IHC), ELISA

Product Details

Purpose:	Aldehyde Reductase
Immunogen:	Peptide with sequence C-DAGHPLYPFNDPY, from the C Terminus of the protein sequence according to NP_006057.1, NP_697021.1.
Sequence:	DAGHPLYPFN DPY
Isotype:	IgG
Specificity:	Both reported variants (NP_006057.1 and NP_697021.1) represent identical protein
Cross-Reactivity:	Cow, Dog, Human, Mouse, Pig, Rat
Purification:	Purified from goat serum by ammonium sulphate precipitation followed by antigen affinity chromatography using the immunizing peptide.
Grade:	Verified

Target Details

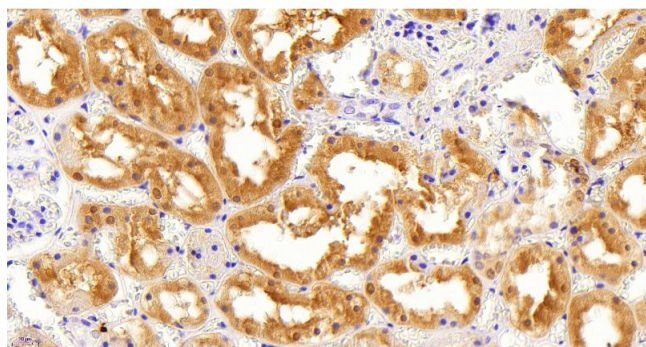
Target:	AKR1A1
Alternative Name:	AKR1A1 (AKR1A1 Products)
Background:	Aldehyde reductase, AKR1A1, aldo-keto reductase family 1, member A1 (aldehyde reductase), ALDR1, ALR, MGC12529, MGC1380, alcohol dehydrogenase, aldo-keto reductase family 1, member A1, DD3, OTTHUMP00000009240, dihydrodiol dehydrogenase 3
Gene ID:	10327, 58810, 78959
NCBI Accession:	NP_006057 , NP_697021
Pathways:	Monocarboxylic Acid Catabolic Process

Application Details

Application Notes:	Immunohistochemistry: Paraffin embedded Human Kidney. Recommended concentration: 5 µg/mL. Western Blot: Approx 37 kDa band observed in Human Liver lysates (calculated MW of 36.6 kDa according to NP_006057.1 and NP_697021.1). Recommended concentration: 0.1-0.3 µg/mL. Primary incubation 1 hour at room temperature. Peptide ELISA: antibody detection limit dilution 1:16000.
Restrictions:	For Research Use only

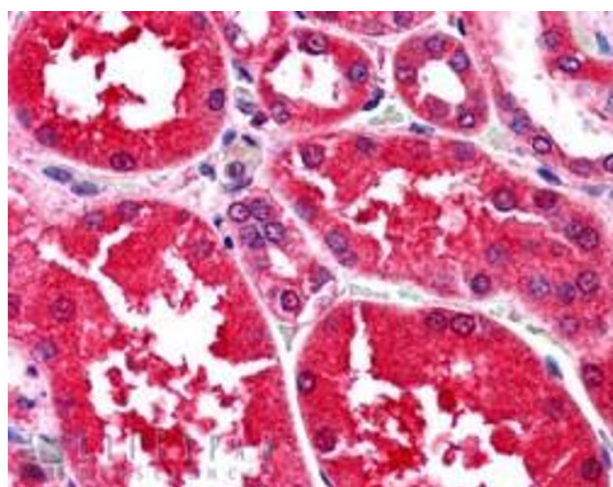
Handling

Format:	Liquid
Concentration:	0.5 mg/mL
Buffer:	Supplied at 0.5 mg/mL in Tris saline, 0.02 % sodium azide, pH 7.3 with 0.5 % bovine serum albumin.
Preservative:	Sodium azide
Precaution of Use:	This product contains Sodium azide: a POISONOUS AND HAZARDOUS SUBSTANCE which should be handled by trained staff only.
Handling Advice:	Minimize freezing and thawing.
Storage:	-20 °C
Storage Comment:	Aliquot and store at -20°C, with minimal freeze/thawing. A working aliquot may be refrigerated at 4°C for a few weeks and still remain viable.



Immunohistochemistry

Image 1. ABIN184795 (5µg/ml) staining of paraffin embedded Human Kidney. Heat induced antigen retrieval with citrate buffer pH 6, HRP-staining.



Immunohistochemistry

Image 2. ABIN184795 (2.5g/ml) staining of paraffin embedded Human Kidney. Steamed antigen retrieval with citrate buffer pH 6, AP-staining. This data was obtained using a previous batch.



Western Blotting

Image 3. ABIN184795 (0.1µg/ml) staining of Human Liver lysate (35µg protein in RIPA buffer). Primary incubation was 1 hour. Detected by chemiluminescence.

Please check the [product details page](#) for more images. Overall 4 images are available for ABIN184795.