

Datasheet for ABIN1847958
anti-MITF antibody (Ser73, Ser180)



[Go to Product page](#)

4 Images

Overview

Quantity:	100 µL
Target:	MITF
Binding Specificity:	Ser73, Ser180
Reactivity:	Human, Mouse
Host:	Rabbit
Clonality:	Polyclonal
Conjugate:	This MITF antibody is un-conjugated
Application:	Western Blotting (WB), Immunohistochemistry (IHC), ELISA, Immunofluorescence (fixed cells) (IF/ICC)

Product Details

Immunogen:	The antiserum was produced against synthesized non-phosphopeptide derived from human MITF around the phosphorylation site of serine 180/73 (P-N-SP-P-M).
Specificity:	Rabbit polyclonal antibody against MITF protein.
Purification:	The antibody was affinity-purified from rabbit antiserum by affinity-chromatography using epitope-specific immunogen

Target Details

Target:	MITF
Alternative Name:	MITF (MITF Products)
UniProt:	O75030

Target Details

Pathways: [Chromatin Binding](#)

Application Details

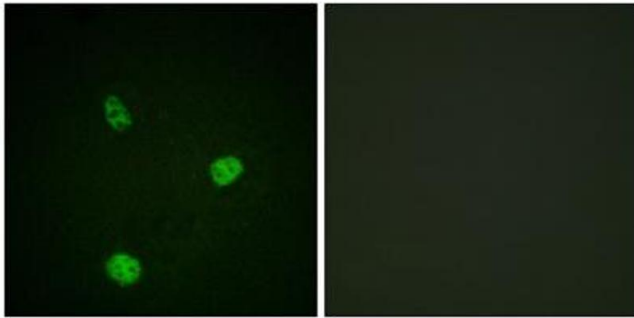
Restrictions: For Research Use only

Handling

Storage: -20 °C

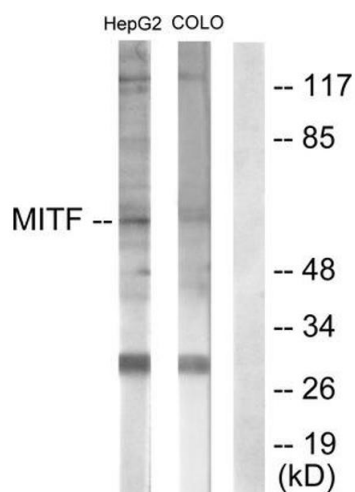
Storage Comment: Aliquot and store at -20 °C. Avoid repeated freeze/thaw cycles.

Images



Immunofluorescence

Image 1. Immunofluorescence analysis of HeLa cells, using MITF (epitope around residue 180/73) antibody.

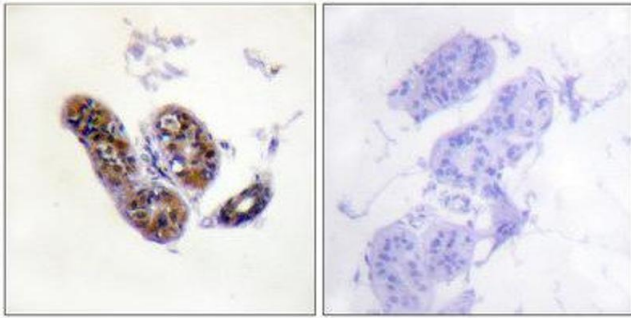


Western Blotting

Image 2. Western blot analysis of extracts from HepG2 cells (lane 1) and COLO205 cells (lane 2), using MITF (epitope around residue 180/73) antibody.

Immunohistochemistry

Image 3.



Please check the [product details page](#) for more images. Overall 4 images are available for ABIN1847958.