

Datasheet for ABIN1847974

**anti-Splicing Factor 1 antibody (Ser82)**

## 4 Images

[Go to Product page](#)

## Overview

Quantity:	100 µL
Target:	Splicing Factor 1 (SF1)
Binding Specificity:	Ser82
Reactivity:	Human, Mouse
Host:	Rabbit
Clonality:	Polyclonal
Conjugate:	This Splicing Factor 1 antibody is un-conjugated
Application:	Western Blotting (WB), ELISA, Immunohistochemistry (IHC), Immunofluorescence (fixed cells) (IF/ICC)

## Product Details

Immunogen:	The antiserum was produced against synthesized non-phosphopeptide derived from human SF1 around the phosphorylation site of serine 82 (S-P-SP-P-E).
Specificity:	Rabbit polyclonal antibody against SF1 protein.
Purification:	The antibody was affinity-purified from rabbit antiserum by affinity-chromatography using epitope-specific immunogen

## Target Details

Target:	Splicing Factor 1 (SF1)
Alternative Name:	SF1 ( <a href="#">SF1 Products</a> )
UniProt:	<a href="#">Q15637</a>

Target Details

Pathways: [Nuclear Receptor Transcription Pathway](#), [Steroid Hormone Mediated Signaling Pathway](#), [Ribonucleoprotein Complex Subunit Organization](#), [Maintenance of Protein Location](#)

Application Details

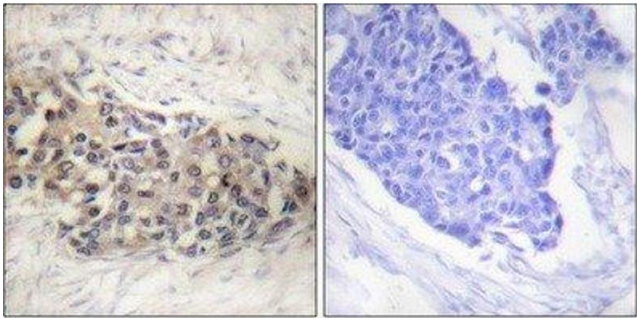
Restrictions: For Research Use only

Handling

Storage: -20 °C

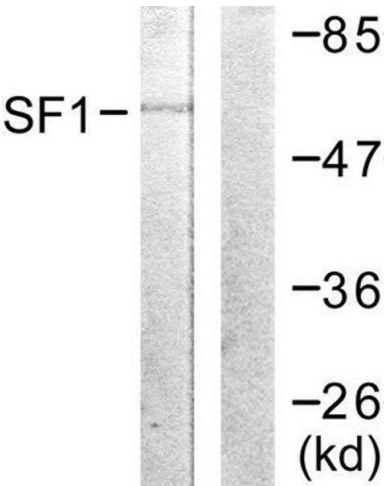
Storage Comment: Aliquot and store at -20 °C. Avoid repeated freeze/thaw cycles.

Images



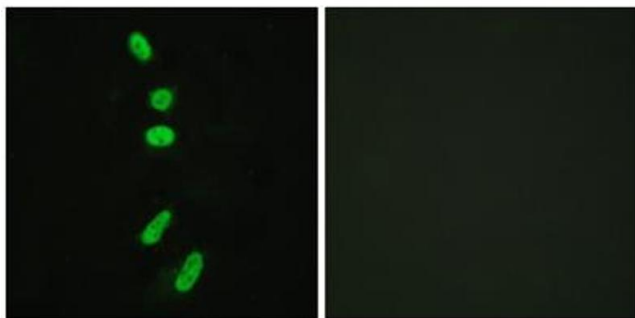
Immunohistochemistry

Image 1.



Western Blotting

Image 2.



### Immunofluorescence

**Image 3.** Immunofluorescence analysis of HeLa cells, using SF1 (epitope around residue 82) antibody.

Please check the [product details page](#) for more images. Overall 4 images are available for ABIN1847974.