

Datasheet for ABIN184799  
**anti-ARL2 antibody (C-Term)**[Go to Product page](#)

## 4 Images

## Overview

Quantity:	100 µg
Target:	ARL2
Binding Specificity:	C-Term
Reactivity:	Human
Host:	Goat
Clonality:	Polyclonal
Conjugate:	This ARL2 antibody is un-conjugated
Application:	Western Blotting (WB), ELISA, Flow Cytometry (FACS), Immunofluorescence (IF)

## Product Details

Purpose:	ARL2
Immunogen:	Peptide with sequence C-LDDISSRIFTAD, from the C Terminus of the protein sequence according to NP_001658.2.
Sequence:	LDDISSRIFT AD
Isotype:	IgG
Cross-Reactivity:	Dog, Human
Purification:	Purified from goat serum by ammonium sulphate precipitation followed by antigen affinity chromatography using the immunizing peptide.
Grade:	Verified

## Target Details

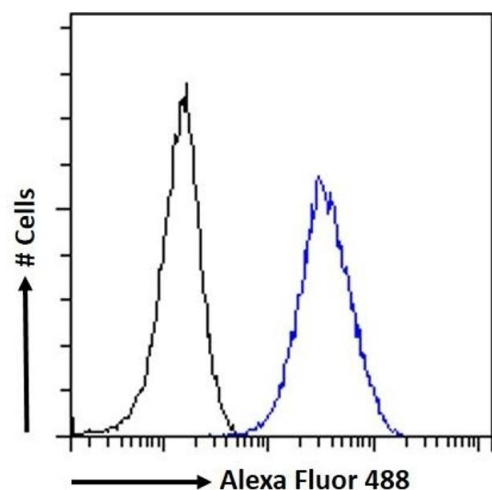
Target:	ARL2
Alternative Name:	ARL2 ( <a href="#">ARL2 Products</a> )
Background:	ARL2, ADP-ribosylation factor-like 2, ARFL2, ADP=ribosylation factor-like 2
Gene ID:	402
NCBI Accession:	<a href="#">NP_001658</a>
Pathways:	<a href="#">Cell-Cell Junction Organization</a> , <a href="#">Maintenance of Protein Location</a>

## Application Details

Application Notes:	Western Blot: Approx. 18 kDa band observed in lysates of cell line A431 and approx. 20 kDa in nuclear lysates of cell line HeLa (calculated MW of 20.9 kDa according to NP_001658.2). Recommended concentration: 0.5-1 µg/mL.Primary incubation 1 hour at room tem Peptide ELISA: antibody detection limit dilution 1:64000.
Comment:	<b>Immunofluorescence:</b> Strong expression of the protein seen in the cytoplasm and nuclei of U2OS cells. Recommended concentration: 10µg/ml. <b>Flow Cytometry:</b> Flow cytometric analysis of A431 cells. Recommended concentration
Restrictions:	For Research Use only

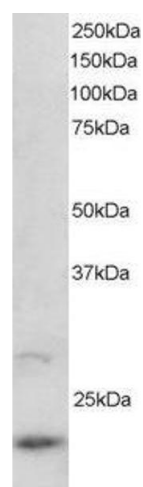
## Handling

Format:	Liquid
Concentration:	0.5 mg/mL
Buffer:	Supplied at 0.5 mg/mL in Tris saline, 0.02 % sodium azide, pH 7.3 with 0.5 % bovine serum albumin.
Preservative:	Sodium azide
Precaution of Use:	This product contains Sodium azide: a POISONOUS AND HAZARDOUS SUBSTANCE which should be handled by trained staff only.
Handling Advice:	Minimize freezing and thawing.
Storage:	-20 °C
Storage Comment:	Aliquot and store at -20°C, with minimal freeze/thawing. A working aliquot may be refrigerated at 4°C for a few weeks and still remain viable.



### Flow Cytometry

**Image 1.** (ABIN184799) Flow cytometric analysis of paraformaldehyde fixed A431 cells (blue line), permeabilized with 0.5 % Triton. Primary incubation 1hr (10 µg/mL) followed by Alexa Fluor 488 secondary antibody (1 µg/mL). IgG control: Unimmunized goat IgG (black line) followed by Alexa Fluor 488 secondary antibody.



### Western Blotting

**Image 2.** ABIN184799 staining (2µg/ml) of U937 lysate (RIPA buffer, 30µg total protein per lane). Primary incubated for 1 hour. Detected by western blot using chemiluminescence.



### Western Blotting

**Image 3.** (ABIN184799) (0.5 µg/mL) staining of A431 (A) and (1 µg/mL) HeLa nuclear (B) cell lysate (30 µg protein in RIPA buffer). Detected by chemiluminescence.

Please check the [product details page](#) for more images. Overall 4 images are available for ABIN184799.