

Datasheet for ABIN184802
anti-IPO7 antibody (C-Term)[2 Images](#)[1 Publication](#)[Go to Product page](#)

Overview

Quantity:	100 µg
Target:	IPO7
Binding Specificity:	C-Term
Reactivity:	Human
Host:	Goat
Clonality:	Polyclonal
Conjugate:	This IPO7 antibody is un-conjugated
Application:	ELISA, Flow Cytometry (FACS)

Product Details

Purpose:	RANBP7 / Importin 7
Immunogen:	Peptide with sequence C-SSFNFGGPAPGMN, from the C Terminus of the protein sequence according to NP_006382.1.
Sequence:	SSFNFGGPAP GMN
Isotype:	IgG
Predicted Reactivity:	Human, Mouse, Rat, Dog, Cow
Purification:	Purified from goat serum by ammonium sulphate precipitation followed by antigen affinity chromatography using the immunizing peptide.
Grade:	Verified

Target Details

Target:	IPO7
Alternative Name:	IPO7 (IPO7 Products)
Background:	IPO7, importin 7, RANBP7, FLJ14581, MGC138673, RAN binding protein 7, RAN-binding protein 7
Gene ID:	10527
NCBI Accession:	NP_006382
Pathways:	Protein targeting to Nucleus

Application Details

Application Notes:	Peptide ELISA: antibody detection limit dilution 1:4000.
Comment:	Flow Cytometry: Flow cytometric analysis of HeLa cells. Recommended concentration: 10ug/ml.
Restrictions:	For Research Use only

Handling

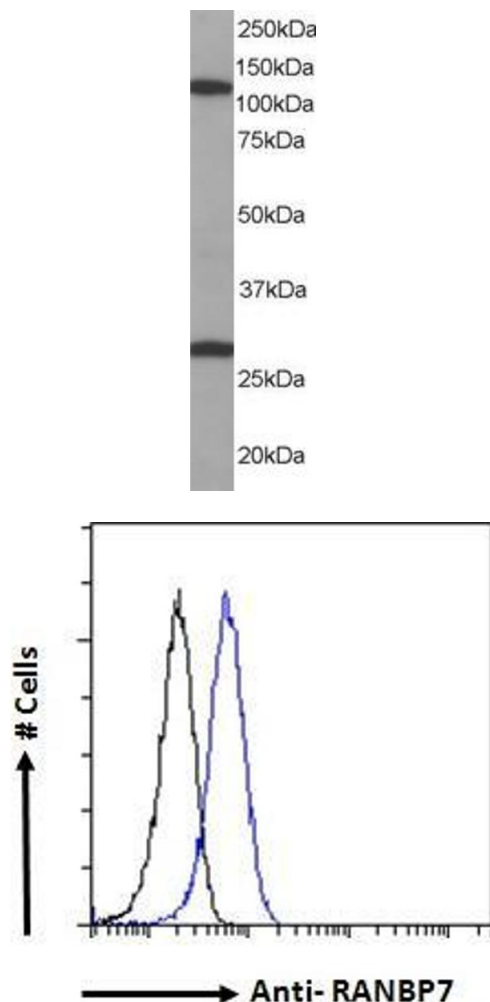
Format:	Liquid
Concentration:	0.5 mg/mL
Buffer:	Supplied at 0.5 mg/mL in Tris saline, 0.02 % sodium azide, pH 7.3 with 0.5 % bovine serum albumin.
Preservative:	Sodium azide
Precaution of Use:	This product contains Sodium azide: a POISONOUS AND HAZARDOUS SUBSTANCE which should be handled by trained staff only.
Handling Advice:	Minimize freezing and thawing.
Storage:	-20 °C
Storage Comment:	Aliquot and store at -20°C, with minimal freeze/thawing. A working aliquot may be refrigerated at 4°C for a few weeks and still remain viable.

Publications

Product cited in:	Saijou, Itoh, Kim, Iemura, Natsume, Miyajima: "Nucleocytoplasmic shuttling of the zinc finger protein EZI Is mediated by importin-7-dependent nuclear import and CRM1-independent export
-------------------	--

mechanisms." in: **The Journal of biological chemistry**, Vol. 282, Issue 44, pp. 32327-37, (2007)
([PubMed](#)).

Images



Western Blotting

Image 1. ABIN184802 staining (0.1µg/ml) of Human Brain lysate (RIPA buffer, 35µg total protein per lane). Primary incubated for 1 hour. Detected by western blot using chemiluminescence.

Flow Cytometry

Image 2. ABIN184802 Flow cytometric analysis of paraformaldehyde fixed HeLa cells (blue line), permeabilized with 0.5% Triton. Primary incubation 1hr (10ug/ml) followed by Alexa Fluor 488 secondary antibody (1ug/ml). IgG control: Unimmunized goat IgG (black line) followed by Alexa Fluor 488 secondary antibody.