



[Go to Product page](#)

Datasheet for ABIN184805
anti-UBE2C antibody (C-Term)

4 Images

Overview

Quantity:	100 µg
Target:	UBE2C
Binding Specificity:	C-Term
Reactivity:	Human
Host:	Goat
Clonality:	Polyclonal
Conjugate:	This UBE2C antibody is un-conjugated
Application:	Western Blotting (WB), ELISA, Immunofluorescence (IF), Immunoprecipitation (IP), Flow Cytometry (FACS)

Product Details

Purpose:	UBE2C / UBCH10
Immunogen:	Peptide with sequence C-QETYSKQVTSQEP, from the C Terminus of the protein sequence according to NP_008950.1, NP_861515.1, NP_861516.1, NP_861517.1, NP_861518.1.
Sequence:	QETYSKQVTS QEP
Isotype:	IgG
Specificity:	This antibody is expected to recognise all reported isoforms. Variants NP_861517.1 and NP_861518.1 encode the same isoform.
Cross-Reactivity:	Human
Purification:	Purified from goat serum by ammonium sulphate precipitation followed by antigen affinity

Product Details

chromatography using the immunizing peptide.

Grade: Verified

Target Details

Target: UBE2C

Alternative Name: UBE2C ([UBE2C Products](#))

Background: UBE2C, UBCH10, dJ447F3.2, ubiquitin-conjugating enzyme E2C, ubiquitin-protein ligase C, ubiquitin carrier protein E2-C, cyclin-selective ubiquitin carrier protein, mitotic-specific ubiquitin-conjugating enzyme, RP3-447F3.1

Gene ID: 11065

NCBI Accession: [NP_008950](#), [NP_861515](#), [NP_861516](#), [NP_861517](#), [NP_861518](#), [NP_001268670](#)

Pathways: [Ubiquitin Proteasome Pathway](#)

Application Details

Application Notes: Western Blot: Approx. 19kDa band observed in lysates of cell lines HeLa and HEK293 (calculated MW of 19.7 kDa according to NP_008950.1). Recommended concentration: 1-3 µg/mL. Primary incubation 1 hour at room temperature.
Peptide ELISA: antibody detection limit dilution 1:32000.

Comment: **Immunofluorescence:** Strong expression of the protein seen in the cytoplasm of U2OS and MCF7 cells. Recommended concentration: 10µg/ml.
Flow Cytometry: Flow cytometric analysis of HeLa cells. Recommended concentration:

Restrictions: For Research Use only

Handling

Format: Liquid

Concentration: 0.5 mg/mL

Buffer: Supplied at 0.5 mg/mL in Tris saline, 0.02 % sodium azide, pH 7.3 with 0.5 % bovine serum albumin.

Preservative: Sodium azide

Precaution of Use: This product contains Sodium azide: a POISONOUS AND HAZARDOUS SUBSTANCE which

Handling

should be handled by trained staff only.

Handling Advice: Minimize freezing and thawing.

Storage: -20 °C

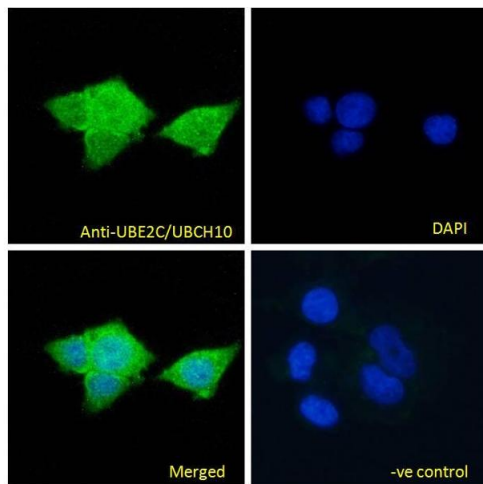
Storage Comment: Aliquot and store at -20°C, with minimal freeze/thawing. A working aliquot may be refrigerated at 4°C for a few weeks and still remain viable.

Images



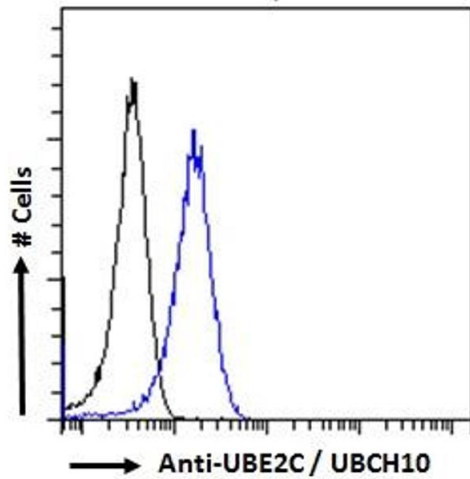
Western Blotting

Image 1. ABIN184805 (2µg/ml) staining of HEK293 (A) and HeLa (B) cell lysate (35µg protein in RIPA buffer). Detected by chemiluminescence.



Immunofluorescence

Image 2. ABIN184805 Immunofluorescence analysis of paraformaldehyde fixed MCF7 cells, permeabilized with 0.15% Triton. Primary incubation 1hr (10ug/ml) followed by Alexa Fluor 488 secondary antibody (4ug/ml), showing cytoplasmic staining. The nuclear stain is DAPI (b)



Flow Cytometry

Image 3. ABIN184805 Flow cytometric analysis of paraformaldehyde fixed HeLa cells (blue line), permeabilized with 0.5% Triton. Primary incubation 1 hr (10ug/ml) followed by Alexa Fluor 488 secondary antibody (2ug/ml). IgG control: Unimmunized goat IgG (black line) fol

Please check the [product details page](#) for more images. Overall 4 images are available for ABIN184805.