



[Go to Product page](#)

Datasheet for ABIN1848058
anti-PAK1/2 antibody (Ser199)

3 Images

Overview

Quantity:	100 µL
Target:	PAK1/2
Binding Specificity:	Ser199
Reactivity:	Human, Rat, Mouse
Host:	Rabbit
Clonality:	Polyclonal
Conjugate:	This PAK1/2 antibody is un-conjugated
Application:	Western Blotting (WB), ELISA, Immunohistochemistry (IHC), Immunofluorescence (fixed cells) (IF/ICC)

Product Details

Immunogen:	The antiserum was produced against synthesized non-phosphopeptide derived from human PAK1/2 around the phosphorylation site of serine 199 (T-K-SP-V-Y).
Specificity:	Rabbit polyclonal antibody against PAK1/2 protein.
Purification:	The antibody was affinity-purified from rabbit antiserum by affinity-chromatography using epitope-specific immunogen

Target Details

Target:	PAK1/2
Abstract:	PAK1/2 Products
UniProt:	Q13153

Application Details

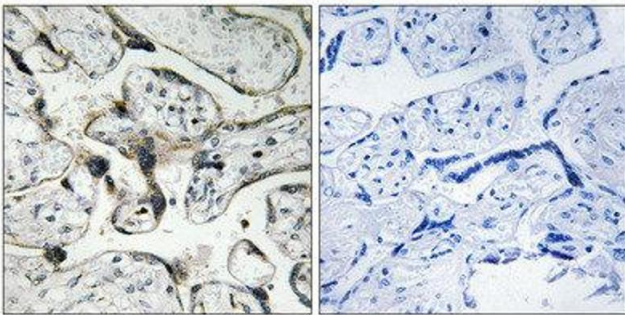
Restrictions: For Research Use only

Handling

Storage: -20 °C

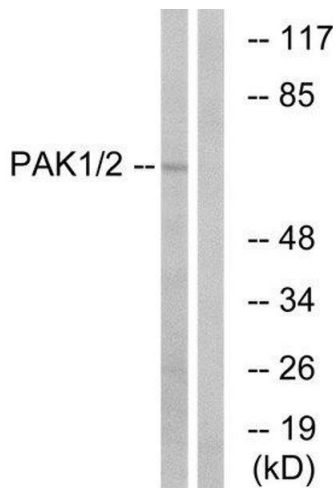
Storage Comment: Aliquot and store at -20 °C. Avoid repeated freeze/thaw cycles.

Images



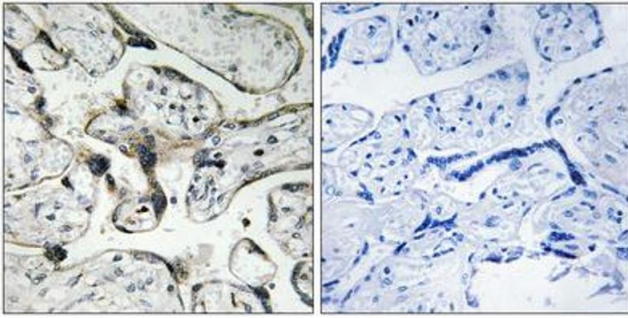
Immunohistochemistry

Image 1.



Western Blotting

Image 2.



Immunohistochemistry

Image 3. Immunohistochemistry analysis of paraffin-embedded human placenta tissue using PAK1/2 (epitope around residue 199) antibody.