



[Go to Product page](#)

Datasheet for ABIN184808  
**anti-CABP1 antibody (N-Term)**

1 Image

Overview

Quantity:	100 µg
Target:	CABP1
Binding Specificity:	N-Term
Reactivity:	Human
Host:	Goat
Clonality:	Polyclonal
Conjugate:	This CABP1 antibody is un-conjugated
Application:	Western Blotting (WB), ELISA

Product Details

Purpose:	CABP1
Immunogen:	GNCVKYPLRNLS
Sequence:	GNCVKYPLRN LS
Isotype:	IgG
Specificity:	This antibody is expected to recognise both Human isoforms.
Cross-Reactivity:	Human
Purification:	Purified from goat serum by ammonium sulphate precipitation followed by antigen affinity chromatography using the immunizing peptide.
Grade:	Verified

## Target Details

---

Target:	CABP1
Alternative Name:	CABP1 ( <a href="#">CABP1 Products</a> )
Background:	CABP1, CALBRAIN, HCALB_BR, calcium binding protein 1 (calbrain), calbrain, calcium binding protein 5, calcium binding protein 1 calbrain, caldendrin
Gene ID:	9478
NCBI Accession:	<a href="#">NP_112482</a> , <a href="#">NP_004267</a>
Pathways:	<a href="#">Synaptic Membrane</a> , <a href="#">Negative Regulation of Transporter Activity</a>

## Application Details

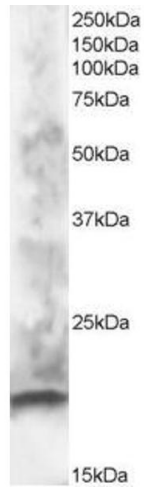
---

Application Notes:	Western Blot: Approx 20 kDa band seen in human brain lysate (predicted MW 19 kDa). Recommended for use at 0.5-2 µg/mL. Peptide ELISA: antibody detection limit dilution 1:32000.
Restrictions:	For Research Use only

## Handling

---

Format:	Liquid
Concentration:	0.5 mg/mL
Buffer:	Supplied at 0.5 mg/mL in Tris saline, 0.02 % sodium azide, pH 7.3 with 0.5 % bovine serum albumin.
Preservative:	Sodium azide
Precaution of Use:	This product contains Sodium azide: a POISONOUS AND HAZARDOUS SUBSTANCE which should be handled by trained staff only.
Handling Advice:	Minimize freezing and thawing.
Storage:	-20 °C
Storage Comment:	Aliquot and store at -20°C, with minimal freeze/thawing. A working aliquot may be refrigerated at 4°C for a few weeks and still remain viable.



### Western Blotting

**Image 1.** ABIN184808 staining (1 $\mu$ g/ml) of human brain lysate (RIPA buffer, 30 $\mu$ g total protein per lane). Primary incubated for 1 hour. Detected by western blot using chemiluminescence.