

Datasheet for ABIN184809

anti-PRDM16 antibody (C-Term)



[Go to Product page](#)

1 Image

1 Publication

Overview

Quantity:	100 µg
Target:	PRDM16
Binding Specificity:	C-Term
Reactivity:	Human, Mouse
Host:	Goat
Clonality:	Polyclonal
Conjugate:	This PRDM16 antibody is un-conjugated
Application:	ELISA, Chromatin Immunoprecipitation (ChIP), Flow Cytometry (FACS)

Product Details

Purpose:	PRDM16 / MEL1
Immunogen:	Peptide with sequence C-TSESGAFHPINHL, from the C Terminus of the protein sequence according to NP_071397.2, NP_955533.1.
Sequence:	TSESGAFHPI NHL
Isotype:	IgG
Specificity:	This antibody is expected to recognise both reported isoforms.
Cross-Reactivity:	Human
Purification:	Purified from goat serum by ammonium sulphate precipitation followed by antigen affinity chromatography using the immunizing peptide.
Grade:	Verified

Target Details

Target:	PRDM16
Alternative Name:	PRDM16 (PRDM16 Products)
Background:	PRDM16, MEL1, KIAA1675, PR domain containing 16, transcription factor MEL1, MGC166915, PFM13, MDS1/EVI1-like, PR-domain zinc finger protein 16
Gene ID:	63976
NCBI Accession:	NP_071397 , NP_955533
Pathways:	Stem Cell Maintenance , Brown Fat Cell Differentiation

Application Details

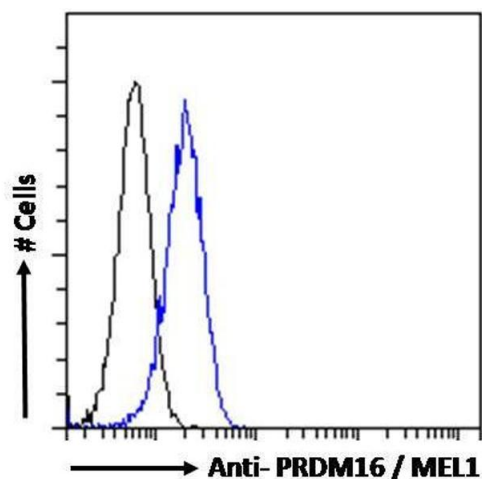
Application Notes:	Peptide ELISA: antibody detection limit dilution 1:32000.
Comment:	Flow Cytometry: Flow cytometric analysis of HEK293 cells. Recommended concentration: 10ug/ml. ChIP: This product has been successfully used in ChIP on Mouse: Hondares E et al. (2011) Cell Transplant. 2011,20(8):1179-92
Restrictions:	For Research Use only

Handling

Format:	Liquid
Concentration:	0.5 mg/mL
Buffer:	Supplied at 0.5 mg/mL in Tris saline, 0.02 % sodium azide, pH 7.3 with 0.5 % bovine serum albumin.
Preservative:	Sodium azide
Precaution of Use:	This product contains Sodium azide: a POISONOUS AND HAZARDOUS SUBSTANCE which should be handled by trained staff only.
Handling Advice:	Minimize freezing and thawing.
Storage:	-20 °C
Storage Comment:	Aliquot and store at -20°C, with minimal freeze/thawing. A working aliquot may be refrigerated at 4°C for a few weeks and still remain viable.

Product cited in: Liu, Guan, Wen, Ma, Xu, Hu, Wei, Li, Wang, Xiang, Liao, Ji: "PRDM16 Inhibits Cell Proliferation and Migration via Epithelial-to-Mesenchymal Transition by Directly Targeting Pyruvate Carboxylase in Papillary Thyroid Cancer." in: **Frontiers in cell and developmental biology**, Vol. 9, pp. 723777, (2021) ([PubMed](#)).

Images



Flow Cytometry

Image 1. ABIN184809 Flow cytometric analysis of paraformaldehyde fixed HEK293 cells (blue line), permeabilized with 0.5% Triton. Primary incubation 1hr (10ug/ml) followed by Alexa Fluor 488 secondary antibody (1ug/ml). IgG control: Unimmunized goat IgG (black line) followed by Alexa Fluor 488 secondary antibody.