

Datasheet for ABIN184812
anti-IRF5 antibody (C-Term)[Go to Product page](#)

4 Images

Overview

Quantity:	100 µg
Target:	IRF5
Binding Specificity:	C-Term
Reactivity:	Human
Host:	Goat
Clonality:	Polyclonal
Conjugate:	This IRF5 antibody is un-conjugated
Application:	Western Blotting (WB), ELISA

Product Details

Purpose:	IRF5
Immunogen:	Peptide with sequence C-QGPWPMHPAGMQ, from the C Terminus of the protein sequence according to NP_002191.1, NP_116032.1, NP_001092097.1, NP_001092099.1.
Sequence:	QGPWPMHPAG MQ
Isotype:	IgG
Specificity:	This antibody is expected to recognize reported isoforms (NP_116032.1, NP_001092097.2 , NP_001092099.1
Cross-Reactivity:	Cow, Human, Mouse, Rat
Purification:	Purified from goat serum by ammonium sulphate precipitation followed by antigen affinity chromatography using the immunizing peptide.

Product Details

Grade: Verified

Target Details

Target: IRF5

Alternative Name: IRF5 ([IRF5 Products](#))

Background: IRF5, interferon regulatory factor 5, SLEB10

Gene ID: 3663

NCBI Accession: [NP_116032](#), [NP_001092097](#), [NP_001092099](#)

Pathways: [TLR Signaling](#), [Autophagy](#)

Application Details

Application Notes: Western Blot: Approx 55+60 kDa bands observed in Human Spleen lysates and approx 65 kDa in lysates of cell line A549 (calculated MW of 57.8 kDa according to NP_001092099.1 and 56.0 kDa according to NP_116032.1, NP_001092097.2). Recommended concentration: 0.3
Peptide ELISA: antibody detection limit dilution 1:128000.

Restrictions: For Research Use only

Handling

Format: Liquid

Concentration: 0.5 mg/mL

Buffer: Supplied at 0.5 mg/mL in Tris saline, 0.02 % sodium azide, pH 7.3 with 0.5 % bovine serum albumin.

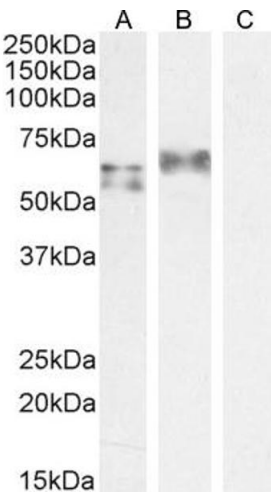
Preservative: Sodium azide

Precaution of Use: This product contains Sodium azide: a POISONOUS AND HAZARDOUS SUBSTANCE which should be handled by trained staff only.

Handling Advice: Minimize freezing and thawing.

Storage: -20 °C

Storage Comment: Aliquot and store at -20°C, with minimal freeze/thawing. A working aliquot may be refrigerated at 4°C for a few weeks and still remain viable.



Western Blotting

Image 1. ABIN184812 staining (1 µg/mL) Human Spleen (A) and A549 cell lysate (B) + peptide (C). (35 µg protein in RIPA buffer). Detected by chemiluminescence

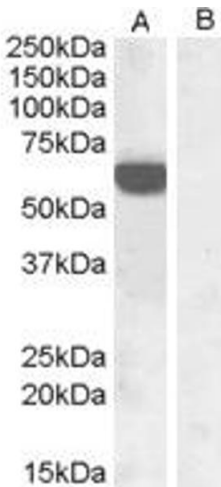


Image 2. HEK293 overexpressing human IRF5 and probed with ABIN184812 at 1ug/ml (mock transfection in lane B).



Image 3. ABIN184812 (0.1µg/ml) staining of lysate of cell line A549 (35µg protein in RIPA buffer). Primary incubation was 1 hour. Detected by chemiluminescence.

Please check the [product details page](#) for more images. Overall 4 images are available for ABIN184812.