



[Go to Product page](#)

Datasheet for ABIN184815  
**anti-FSTL1 antibody (C-Term)**

5 Images

Overview

Quantity:	100 µg
Target:	FSTL1
Binding Specificity:	C-Term
Reactivity:	Human
Host:	Goat
Clonality:	Polyclonal
Conjugate:	This FSTL1 antibody is un-conjugated
Application:	Western Blotting (WB), ELISA, Flow Cytometry (FACS), Immunofluorescence (IF)

Product Details

Purpose:	FSTL1
Immunogen:	Peptide with sequence C-TAEKTKRVSTKEI, from the C Terminus of the protein sequence according to NP_009016.1.
Sequence:	TAEKTKRVST KEI
Isotype:	IgG
Cross-Reactivity:	Human
Purification:	Purified from goat serum by ammonium sulphate precipitation followed by antigen affinity chromatography using the immunizing peptide.
Grade:	Verified

## Target Details

---

Target:	FSTL1
Alternative Name:	FSTL1 ( <a href="#">FSTL1 Products</a> )
Background:	FSTL1, follistatin-like 1, FRP, FSL1, follistatin-related protein, FLJ50214, FLJ52277,
Gene ID:	11167
NCBI Accession:	<a href="#">NP_009016</a>

## Application Details

---

Application Notes:	Western Blot: Approx 50 kDa band observed in Human Ovary lysates. (calculated MW of 35.0 kDa according to NP_009016.1). This band corresponds to earlier findings from other sources and was successfully blocked by incubation with the immunizing peptide. R Peptide ELISA: antibody detection limit dilution 1:16000.
Comment:	<b>Immunofluorescence:</b> Strong expression of the protein seen in the cytoplasm and vesicles of A431 cells. Recommended concentration: 10µg/ml. <b>Flow Cytometry:</b> Flow cytometric analysis of A549 cells. Recommended concentrati
Restrictions:	For Research Use only

## Handling

---

Format:	Liquid
Concentration:	0.5 mg/mL
Buffer:	Supplied at 0.5 mg/mL in Tris saline, 0.02 % sodium azide, pH 7.3 with 0.5 % bovine serum albumin.
Preservative:	Sodium azide
Precaution of Use:	This product contains Sodium azide: a POISONOUS AND HAZARDOUS SUBSTANCE which should be handled by trained staff only.
Handling Advice:	Minimize freezing and thawing.
Storage:	-20 °C
Storage Comment:	Aliquot and store at -20°C, with minimal freeze/thawing. A working aliquot may be refrigerated at 4°C for a few weeks and still remain viable.

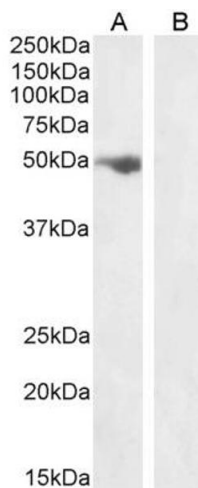


### Western Blotting

**Image 1.** ABIN184815 staining (0.5µg/ml) of Human Placenta lysate (RIPA buffer, 35µg total protein per lane). Primary incubated for 1 hour. Detected by western blot using chemiluminescence.



**Image 2.** ABIN184815 (0.3 µg/mL) staining of Placenta lysate (35 µg protein in RIPA buffer). Primary incubation was 1 hour. Detected by chemiluminescence.



### Western Blotting

**Image 3.** ABIN184815 (1ug/ml) staining of Human Ovary lysate (A) + peptide (B) (35µg protein in RIPA buffer). Detected by chemiluminescence.

Please check the [product details page](#) for more images. Overall 5 images are available for ABIN184815.