



[Go to Product page](#)

Datasheet for ABIN184821  
**anti-NDC80 antibody (C-Term)**

3 Images

Overview

Quantity:	100 µg
Target:	NDC80
Binding Specificity:	C-Term
Reactivity:	Human
Host:	Goat
Clonality:	Polyclonal
Conjugate:	This NDC80 antibody is un-conjugated
Application:	Western Blotting (WB), ELISA, Immunohistochemistry (IHC)

Product Details

Purpose:	HEC1
Immunogen:	C-YEKKATLIKSSEE
Sequence:	YEKKATLIKS SEE
Isotype:	IgG
Cross-Reactivity:	Human
Purification:	Purified from goat serum by ammonium sulphate precipitation followed by antigen affinity chromatography using the immunizing peptide.
Grade:	Verified

## Target Details

---

Target:	NDC80
Alternative Name:	NDC80 ( <a href="#">NDC80 Products</a> )
Background:	NDC80, HEC1, HEC, highly expressed in cancer, rich in leucine heptad repeats, HEC-1, KNTC2, NDC80 homolog, kinetochore complex component ( <i>S. cerevisiae</i> ), TID3, hsNDC80, kinetochore associated 2
Gene ID:	10403
NCBI Accession:	<a href="#">NP_006092</a>
Pathways:	<a href="#">Maintenance of Protein Location</a>

## Application Details

---

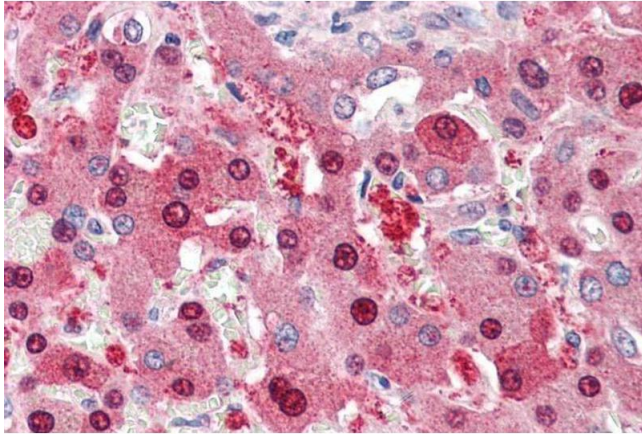
Application Notes:	Immunohistochemistry: Paraffin embedded Human Liver and Adrenal Gland. Recommended concentration: 5 µg/mL. Western Blot: Approx 75-80 kDa band observed in Hela lysate (predicted MW of 74 kDa according to NP_006092). Recommended for use at 0.5-2 µg/mL. Peptide ELISA: antibody detection limit dilution 1:32000.
--------------------	---

Restrictions:	For Research Use only
---------------	-----------------------

## Handling

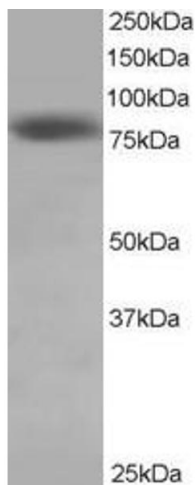
---

Format:	Liquid
Concentration:	0.5 mg/mL
Buffer:	Supplied at 0.5 mg/mL in Tris saline, 0.02 % sodium azide, pH 7.3 with 0.5 % bovine serum albumin.
Preservative:	Sodium azide
Precaution of Use:	This product contains Sodium azide: a POISONOUS AND HAZARDOUS SUBSTANCE which should be handled by trained staff only.
Handling Advice:	Minimize freezing and thawing.
Storage:	-20 °C
Storage Comment:	Aliquot and store at -20°C, with minimal freeze/thawing. A working aliquot may be refrigerated at 4°C for a few weeks and still remain viable.



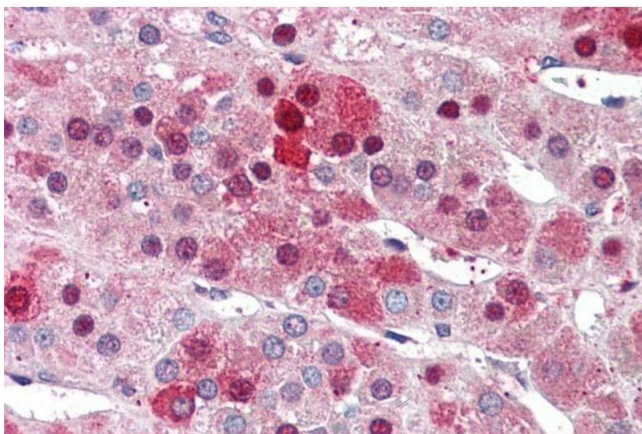
### Immunohistochemistry

**Image 1.** ABIN184821 (5 $\mu$ g/ml) staining of paraffin embedded Human Liver. Steamed antigen retrieval with citrate buffer pH 6, AP-staining.



### Western Blotting

**Image 2.** ABIN184821 staining (0.5 $\mu$ g/ml) of Hela lysate (RIPA buffer, 35 $\mu$ g total protein per lane). Primary incubated for 1 hour. Detected by chemiluminescence.



### Immunohistochemistry

**Image 3.** ABIN184821 (5 $\mu$ g/ml) staining of paraffin embedded Human Adrenal Gland. Steamed antigen retrieval with citrate buffer pH 6, AP-staining.