

Datasheet for ABIN1848218
anti-ILK antibody (Ser246)[Go to Product page](#)

4 Images

Overview

Quantity:	100 µL
Target:	ILK
Binding Specificity:	Ser246
Reactivity:	Human, Mouse, Rat
Host:	Rabbit
Clonality:	Polyclonal
Conjugate:	This ILK antibody is un-conjugated
Application:	Western Blotting (WB), ELISA, Immunohistochemistry (IHC)

Product Details

Immunogen:	The antiserum was produced against synthesized non-phosphopeptide derived from human ILK around the phosphorylation site of serine 246 (I-F-SP-H-P).
Specificity:	Rabbit polyclonal antibody against ILK protein.
Purification:	The antibody was affinity-purified from rabbit antiserum by affinity-chromatography using epitope-specific immunogen

Target Details

Target:	ILK
Alternative Name:	ILK (ILK Products)
UniProt:	Q13418

Target Details

Pathways: [Regulation of Muscle Cell Differentiation](#), [Regulation of Cell Size](#), [Maintenance of Protein Location](#), [Skeletal Muscle Fiber Development](#), [Smooth Muscle Cell Migration](#)

Application Details

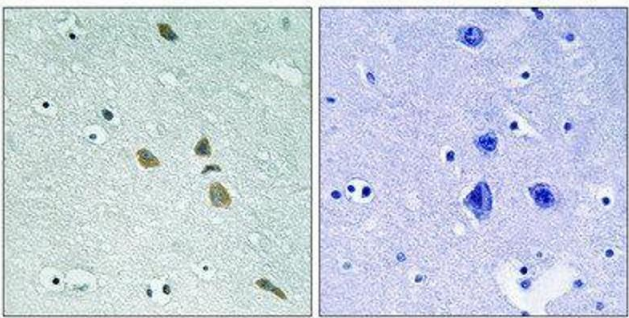
Restrictions: For Research Use only

Handling

Storage: -20 °C

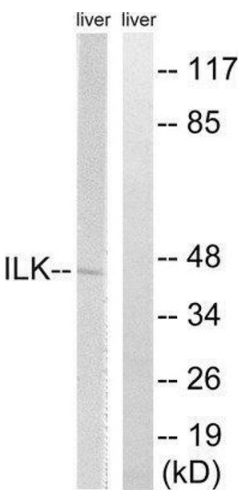
Storage Comment: Aliquot and store at -20 °C. Avoid repeated freeze/thaw cycles.

Images



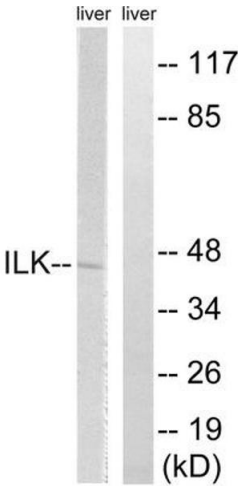
Immunohistochemistry

Image 1.



Western Blotting

Image 2.



Western Blotting

Image 3. Western blot analysis of extracts from rat liver cells, using ILK (epitope around residue 246) antibody.

Please check the [product details page](#) for more images. Overall 4 images are available for ABIN1848218.