



[Go to Product page](#)

Datasheet for ABIN184828

## anti-RPS6KB1 antibody (C-Term)

### 4 Images

#### Overview

Quantity:	100 µg
Target:	RPS6KB1
Binding Specificity:	C-Term
Reactivity:	Human, Mouse
Host:	Goat
Clonality:	Polyclonal
Conjugate:	This RPS6KB1 antibody is un-conjugated
Application:	Western Blotting (WB), ELISA

#### Product Details

Purpose:	p70S6K / RPS6KB1
Immunogen:	Peptide with sequence C-MISKRPEHLRMNL, from the C Terminus of the protein sequence according to NP_003152.1.
Sequence:	MISKRPEHLR MNL
Isotype:	IgG
Cross-Reactivity:	Cow, Dog, Human, Mouse, Rat
Purification:	Purified from goat serum by ammonium sulphate precipitation followed by antigen affinity chromatography using the immunizing peptide.
Grade:	Verified

## Target Details

---

Target:	RPS6KB1
Alternative Name:	RPS6KB1 ( <a href="#">RPS6KB1 Products</a> )
Background:	RPS6KB1, p70-S6K, ribosomal protein S6 kinase, 70kD, polypeptide 1, PS6K, S6K, S6K1, STK14A, p70(S6K)-alpha, p70-alpha, p70 S6 kinase, alpha 1, p70 S6 kinase, alpha 2, ribosomal protein S6 kinase, 70kD, polypeptide 1, serine/threonine kinase 14 alpha
Gene ID:	6198, 72508, 83840
NCBI Accession:	<a href="#">NP_003152</a>
Pathways:	<a href="#">PI3K-Akt Signaling</a> , <a href="#">RTK Signaling</a> , <a href="#">AMPK Signaling</a> , <a href="#">Regulation of Cell Size</a> , <a href="#">Skeletal Muscle Fiber Development</a> , <a href="#">Feeding Behaviour</a> , <a href="#">G-protein mediated Events</a> , <a href="#">Smooth Muscle Cell Migration</a> , <a href="#">Interaction of EGFR with phospholipase C-gamma</a> , <a href="#">Warburg Effect</a>

## Application Details

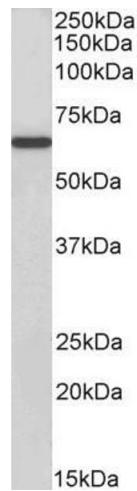
---

Application Notes:	Western Blot: Approx 60 kDa band observed in lysates of Human Placenta and of cell line NIH3T3 (calculated MW of 59.1 kDa according to NP_003152.1). Recommended concentration: 0.3-1 µg/mL. Primary incubation was 1 hour. Preliminary testing was unsuccessful. Peptide ELISA: antibody detection limit dilution 1:64000.
Restrictions:	For Research Use only

## Handling

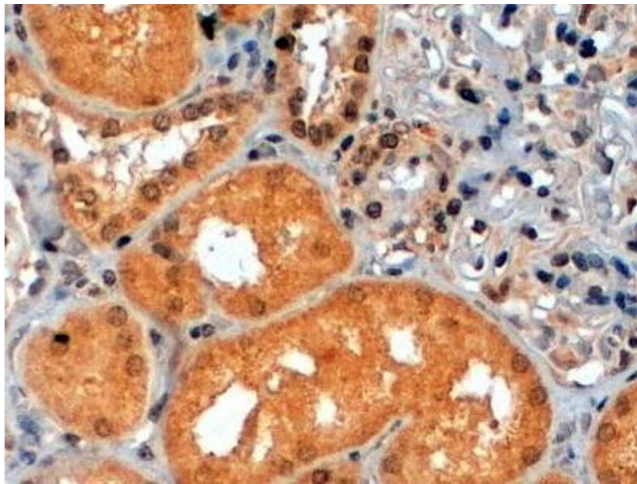
---

Format:	Liquid
Concentration:	0.5 mg/mL
Buffer:	Supplied at 0.5 mg/mL in Tris saline, 0.02 % sodium azide, pH 7.3 with 0.5 % bovine serum albumin.
Preservative:	Sodium azide
Precaution of Use:	This product contains Sodium azide: a POISONOUS AND HAZARDOUS SUBSTANCE which should be handled by trained staff only.
Handling Advice:	Minimize freezing and thawing.
Storage:	-20 °C
Storage Comment:	Aliquot and store at -20°C, with minimal freeze/thawing. A working aliquot may be refrigerated at 4°C for a few weeks and still remain viable.



### Western Blotting

**Image 1.** ABIN184828 (1 $\mu$ g/ml) staining of NIH3T3 cell lysate (35 $\mu$ g protein in RIPA buffer). Detected by chemiluminescence.



### Immunohistochemistry

**Image 2.** ABIN184828 (2 $\mu$ g/ml) staining of paraffin embedded Human Kidney. Steamed antigen retrieval with citrate buffer pH 6, HRP-staining. This data is from a previous batch, not on sale.



**Image 3.** ABIN184828 staining (0.05  $\mu$ g/mL) of Human Placenta lysate (RIPA buffer, 35  $\mu$ g total protein per lane). Primary incubated for 1 hour. Detected by western blot using chemiluminescence.

Please check the [product details page](#) for more images. Overall 4 images are available for ABIN184828.