

Datasheet for ABIN1848296
anti-FGFR1/FGFR2 antibody (Tyr463, Tyr466)



[Go to Product page](#)

2 Images

Overview

Quantity:	100 µL
Target:	FGFR1/FGFR2
Binding Specificity:	Tyr463, Tyr466
Reactivity:	Human, Rat, Mouse
Host:	Rabbit
Clonality:	Polyclonal
Conjugate:	This FGFR1/FGFR2 antibody is un-conjugated
Application:	Western Blotting (WB), ELISA

Product Details

Immunogen:	The antiserum was produced against synthesized non-phosphopeptide derived from human FGFR1/2 around the phosphorylation site of tyrosine 463/466.
Specificity:	Rabbit polyclonal antibody against FGFR1/2 protein.
Purification:	The antibody was affinity-purified from rabbit antiserum by affinity-chromatography using epitope-specific immunogen

Target Details

Target:	FGFR1/FGFR2
Abstract:	FGFR1/FGFR2 Products
UniProt:	P11362 , P21802

Application Details

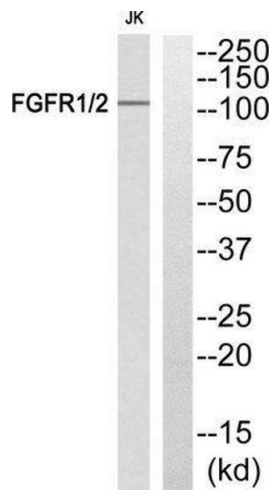
Restrictions: For Research Use only

Handling

Storage: -20 °C

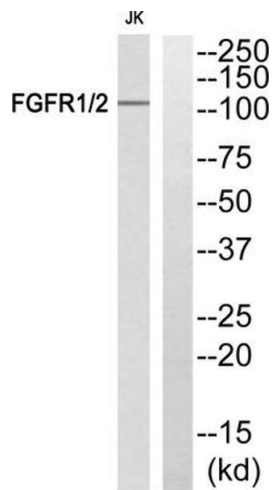
Storage Comment: Aliquot and store at -20 °C. Avoid repeated freeze/thaw cycles.

Images



Western Blotting

Image 1.



Western Blotting

Image 2.