



[Go to Product page](#)

Datasheet for ABIN1848316
anti-APLF antibody (Ser116)

5 Images

Overview

Quantity:	100 µL
Target:	APLF
Binding Specificity:	Ser116
Reactivity:	Human, Mouse
Host:	Rabbit
Clonality:	Polyclonal
Conjugate:	This APLF antibody is un-conjugated
Application:	ELISA, Immunohistochemistry (IHC), Western Blotting (WB)

Product Details

Immunogen:	The antiserum was produced against synthesized non-phosphopeptide derived from human APLF around the phosphorylation site of serine 116 (R-N-SP-Q-V).
Specificity:	Rabbit polyclonal antibody against APLF protein.
Purification:	The antibody was affinity-purified from rabbit antiserum by affinity-chromatography using epitope-specific immunogen

Target Details

Target:	APLF
Alternative Name:	APLF (APLF Products)
UniProt:	Q8IW19

Target Details

Pathways: [DNA Damage Repair](#)

Application Details

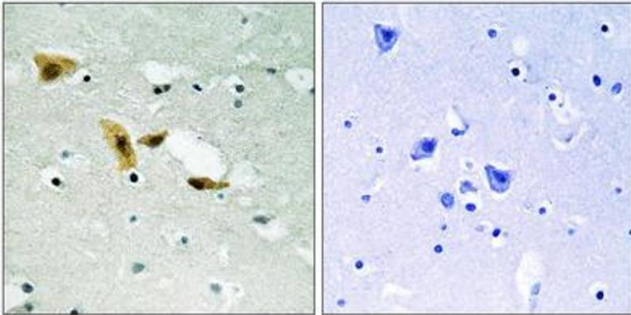
Restrictions: For Research Use only

Handling

Storage: -20 °C

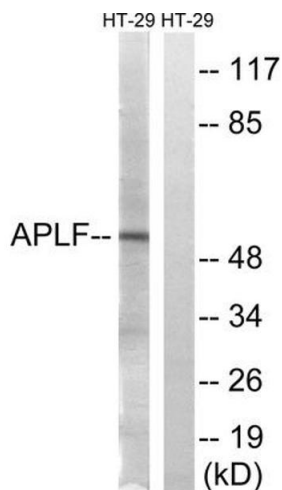
Storage Comment: Aliquot and store at -20 °C. Avoid repeated freeze/thaw cycles.

Images



Western Blotting

Image 1. Western blot analysis of extracts from 3T3 cells, using APLF (epitope around residue 116) antibody.

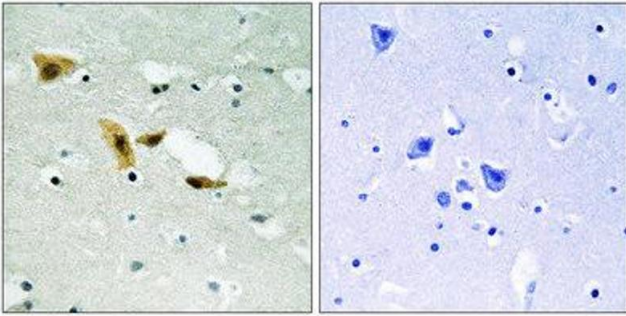


Western Blotting

Image 2. Immunohistochemistry analysis of paraffin-embedded human brain tissue, using APLF (epitope around residue 116) antibody.

Immunohistochemistry

Image 3.



Please check the [product details page](#) for more images. Overall 5 images are available for ABIN1848316.