

Datasheet for ABIN1848370
anti-Protein Tob1 (TOB1) (Ser164) antibody



[Go to Product page](#)

2 Images

Overview

Quantity:	100 µL
Target:	Protein Tob1 (TOB1)
Binding Specificity:	Ser164
Reactivity:	Human, Mouse, Rat
Host:	Rabbit
Clonality:	Polyclonal
Conjugate:	Un-conjugated
Application:	Western Blotting (WB), ELISA, Immunohistochemistry (IHC)

Product Details

Immunogen:	The antiserum was produced against synthesized non-phosphopeptide derived from human TOB1 around the phosphorylation site of serine 164 (A-V-SP-P-T).
Specificity:	Rabbit polyclonal antibody against TOB1 protein.
Purification:	The antibody was affinity-purified from rabbit antiserum by affinity-chromatography using epitope-specific immunogen

Target Details

Target:	Protein Tob1 (TOB1)
Alternative Name:	TOB1 (TOB1 Products)
UniProt:	P50616

Application Details

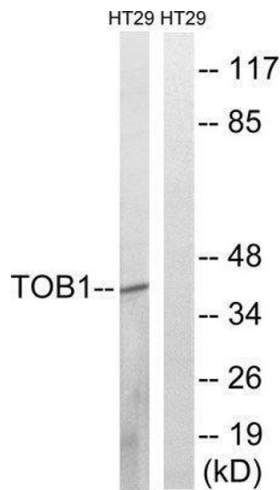
Restrictions: For Research Use only

Handling

Storage: -20 °C

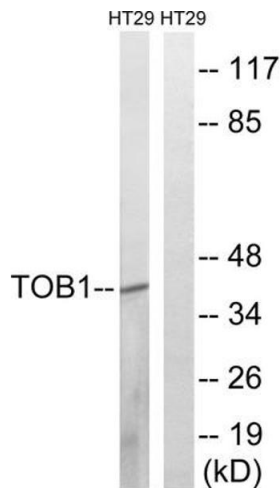
Storage Comment: Aliquot and store at -20 °C. Avoid repeated freeze/thaw cycles.

Images



Western Blotting

Image 1.



Western Blotting

Image 2. Western blot analysis of extracts from HT-29 cells, treated with serum (20%, 15mins), using TOB1 (epitope around residue 164) antibody.