

Datasheet for ABIN1848426
anti-Actin antibody (pan)



[Go to Product page](#)

2 Images

Overview

Quantity:	100 µL
Target:	Actin
Binding Specificity:	pan
Reactivity:	Human, Rat, Mouse
Host:	Rabbit
Clonality:	Polyclonal
Conjugate:	This Actin antibody is un-conjugated
Application:	Western Blotting (WB), Immunohistochemistry (IHC), ELISA

Product Details

Immunogen:	The antiserum was produced against synthesized peptide derived from C-terminal of human Actin.
Specificity:	Rabbit polyclonal antibody against Actin-pan protein.
Purification:	The antibody was affinity-purified from rabbit antiserum by affinity-chromatography using epitope-specific immunogen

Target Details

Target:	Actin
Alternative Name:	Actin-pan (Actin Products)
UniProt:	P60709 , Q9BYX7 , P63261

Application Details

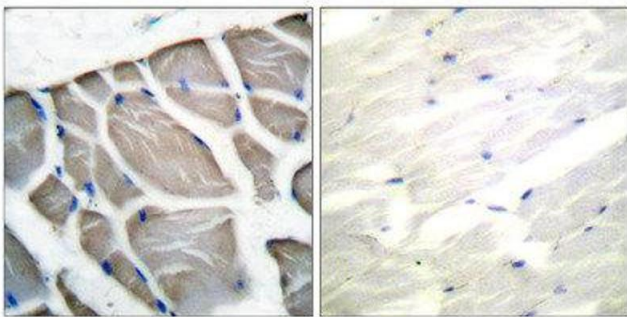
Restrictions: For Research Use only

Handling

Storage: -20 °C

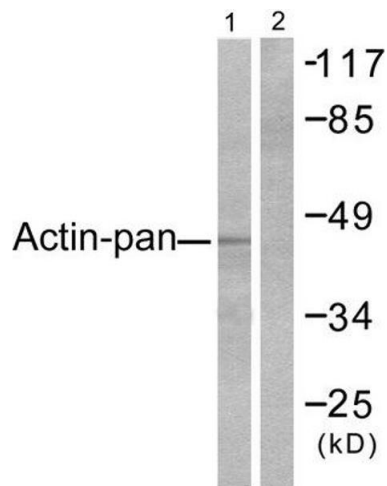
Storage Comment: Aliquot and store at -20 °C. Avoid repeated freeze/thaw cycles.

Images



Immunohistochemistry

Image 1.



Western Blotting

Image 2.